



PAME II-2020 – Shipping Expert Group Pre-meeting Agenda item 6.3 (b)

Arctic Marine Tourism Project (AMTP): Development in the Arctic and enabling real change

Co-leads: Canada, Iceland, UK

This project has the following two components:

Work package 1 objective: Arctic Marine Tourism knowledge and information

- **To** compile data on tourism vessels in the Arctic using the ASTD database to better understand recent developments, identify gaps in data, and explore the feasibility to map the use and carriage of AIS by vessels not obligated to do so by IMO regulations.

Work package 2 objective: Framework for Best Practice Guidelines

- **To** summarize existing site-specific guidelines for near-shore and coastal areas of the Arctic visited by passengers of marine tourism vessels and pleasure crafts.

The final product would be a summary report with recommendations on next steps, for Ministerial approval in May 2021.

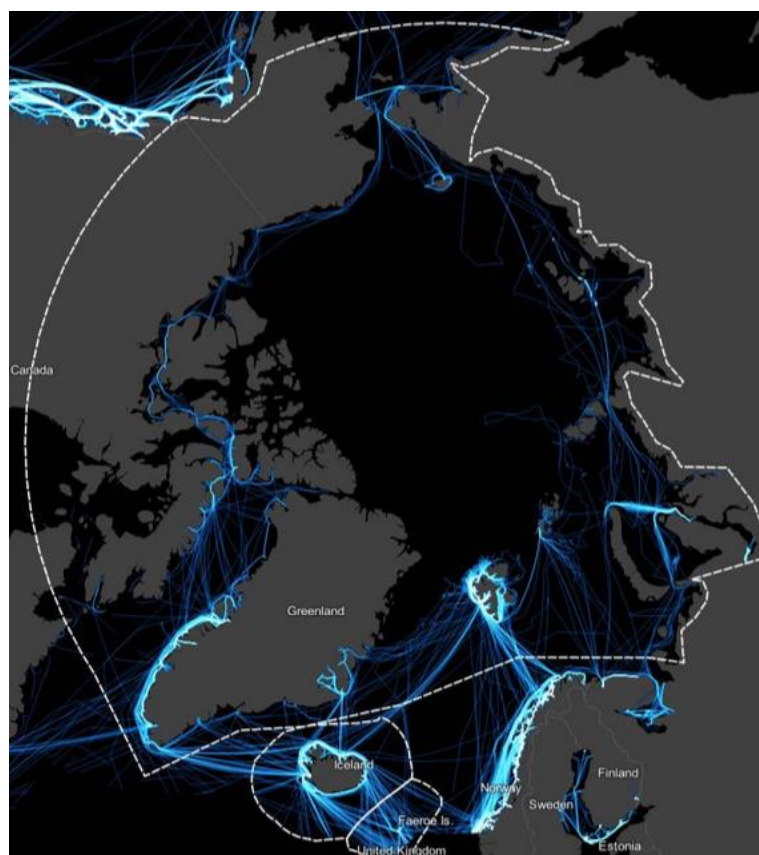
Progress on Work Package 1:

The project co-leads held a workshop in conjunction with the PAME I-2020 meeting in Oslo. The aim of the workshop was to seek input and generate discussion on the project. A workshop report is [available here](#).

The workshop was attended by around 20 participants. The UK had generously offered to provide funding for analysis of data for WP1 via the British Antarctic Survey (BAS). Following the workshop, BAS liaised with the PAME Secretariat in the analysis, which concluded in the summer of 2020. The results were a series of documents for further analysis by the PAME Secretariat. BAS also provided a report on the process and data analysis and a series of map to be produced. BAS work was very well received by the co-leads.

A draft report outline is a work in progress by the co-leads. The PAME Secretariat will oversee further data analysis and provide information for the final report, which will be written by the co-leads. The report will define the geographic area and the ship types used for the data analysis, include trend analysis on tourism ships in the Arctic, the number of ships, type of fuel they used and overview existing regulations for tourism vessels.

Below is a map made by BAS, showing tracks of all tourist ships (cruise and passenger vessels) in 2019.



Progress on Work Package 2:

The project co-leads have acquired the services of the Association of Arctic Expedition Cruise Operators (AECO) to develop the 1st draft of WP 2 by mid-Sep i.e.:

- Task 1: Develop a list of existing site-specific guidelines for near-shore and coastal areas of the Arctic frequented by passengers of marine tourism vessels and pleasure craft.
- Task 2: Review existing site-specific guidelines and prepare a draft template with commonalities or best practices.

Proposed timeline to finalize WPs 1 and 2:

- 15 October: First draft sent to PAME for review
- 15 November: Comments due on first draft
- 23 November: Second draft sent to PAME for review
- 21 December: Comments due on second draft
- January 2021: Final draft sent to PAME I-2020 for review
- PAME I-2021: final draft approved for submission to SAOs and Ministers
- March 2021: Final report ready for layout
- May 2021: Arctic Council Ministerial meeting

Action: PAME provides comments and agrees to a timeline to finalize both WPs