



Status and next steps of the PAMPAN initiative (Pan-Arctic Marine Protected Area Network)

Martin Sommerkorn
WWF Arctic Programme
for the PAMPAN team

PAME I-2020, Oslo, Norway



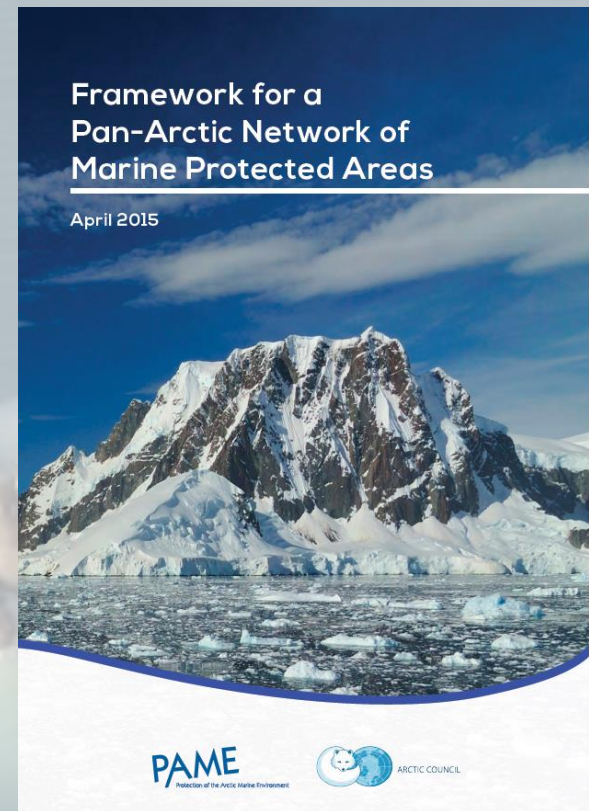
PAMPAN purpose and objectives

- Goal:

to identify and map an ecologically representative and well-connected pan-Arctic network of marine areas specially-managed for the conservation and protection of Arctic marine biodiversity, ecological processes, and associated ecosystem services and cultural values.

- Objectives:

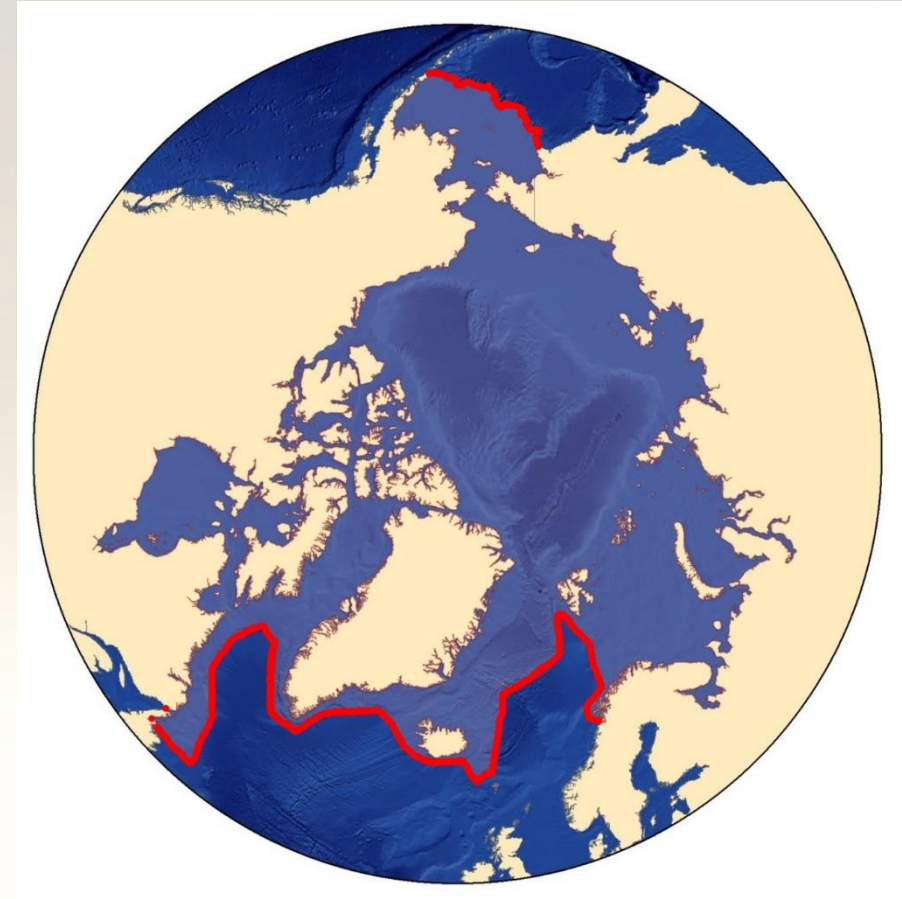
- to showcase and apply a transparent and systematic approach,
- to produce maps as concrete proposals for planning and implementation processes,
- to initiate and engage a community of practice in an inclusive and iterative process.





Pan-Arctic analysis scope

- MPA network planning must consider a variety of nested spatial scales – the pan-Arctic (biome) scale deserves a dedicated analysis.
- Focus is on conservation features that are representative or distinctive at the pan-Arctic scale – this may be different sets than e.g. at national scale.
- Pan-Arctic analysis is neither the same as the sum of lower scale analyses, nor does it replace them.





PAMPAN – planned outputs 2020

- Map sets showing scenarios of a pan-Arctic network of Priority Areas for Conservation;
- Project report: input data, methods, analyses, review and parameter-setting processes, involved experts;
- Scientific articles.



PAMPAN status

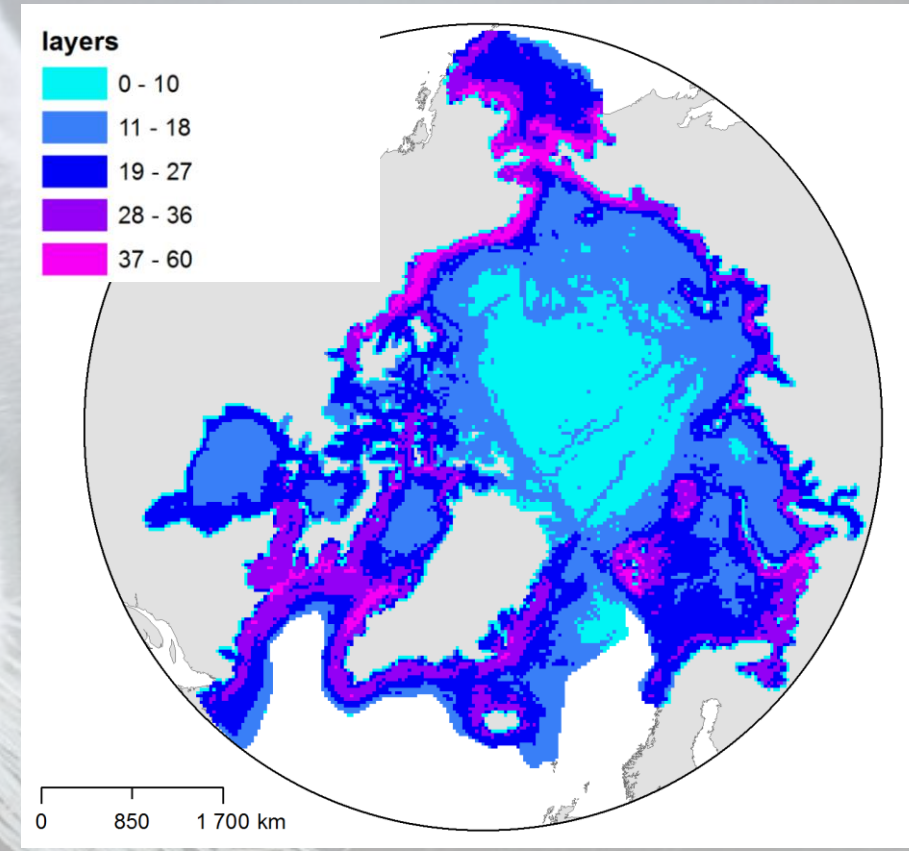
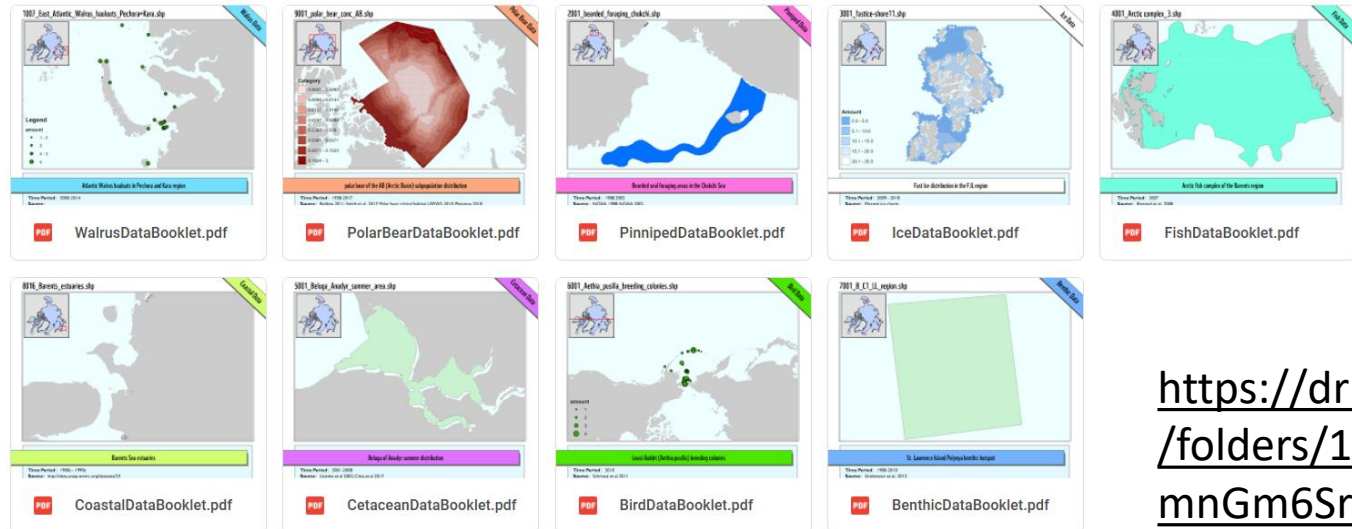
- 3 workshops over 2 years involving experts from across the Arctic .
 - approach, collaboration, principles and approaches, geographic scope, conservation features, dataset availability, analysis parameters.
- Four iterative runs of a spatial analysis and decision-support software tool (Marxan)
 - reviewing outputs, and refining datasets and analysis parameters (several regional workshops/ consultations).
- A comprehensive and up-to-date pan-Arctic spatial database of marine Arctic conservation features.
- A set of scenarios for a Pan-Arctic Marine Protected Areas Network, with mapped Priority Areas for Conservation.



PAMPAN data and metadata

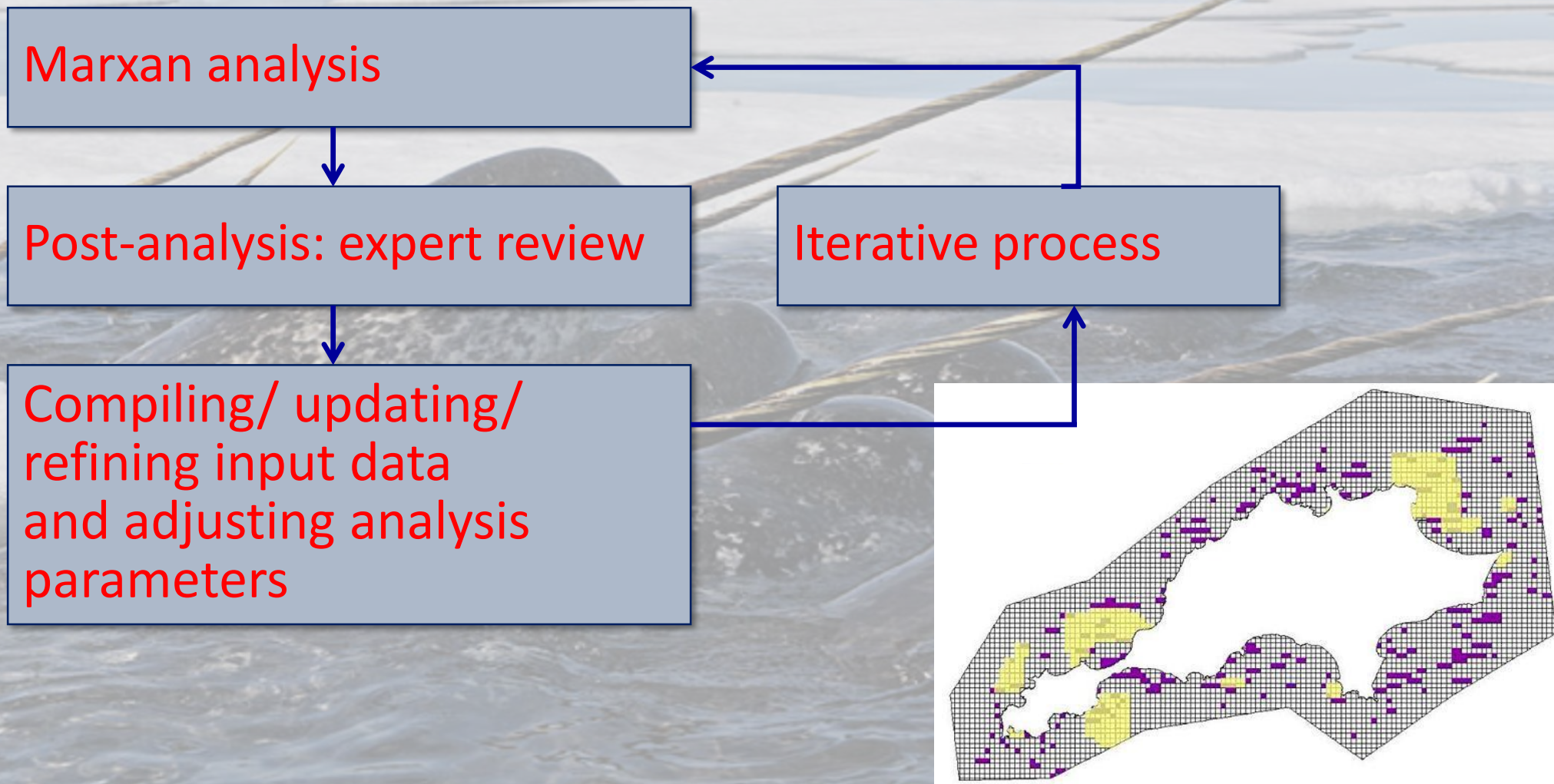
Five thematic groups, ~780 conservation features

- Marine mammals
- Birds
- Fish
- Ice /plankton
- Benthos



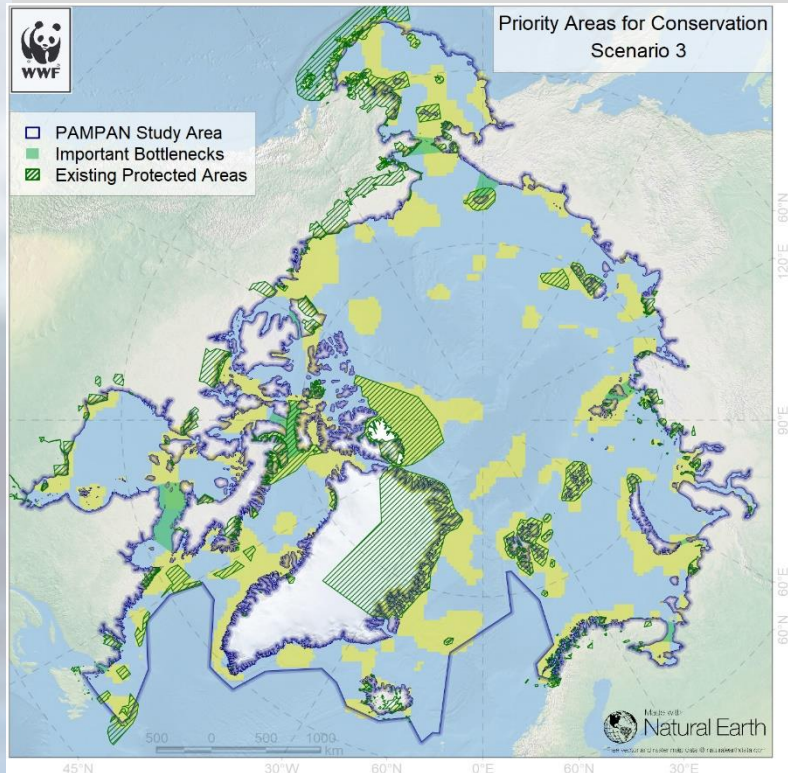
<https://drive.google.com/drive/folders/15rIxxNNVuUzF8jHNdmnGm6Sr0EA3ivK8V>

An iterative, expert-guided process

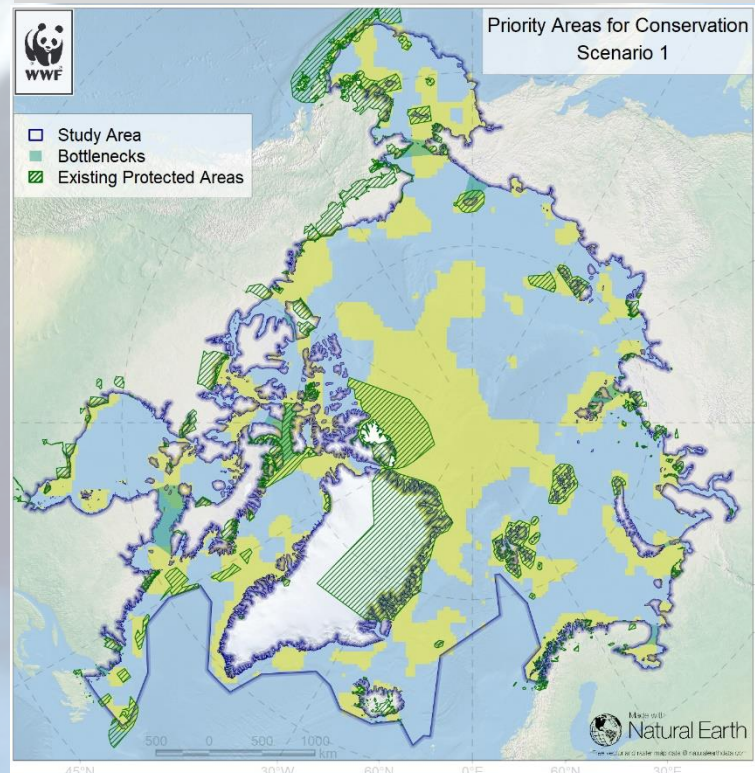


Best solution scenarios after four process iterations

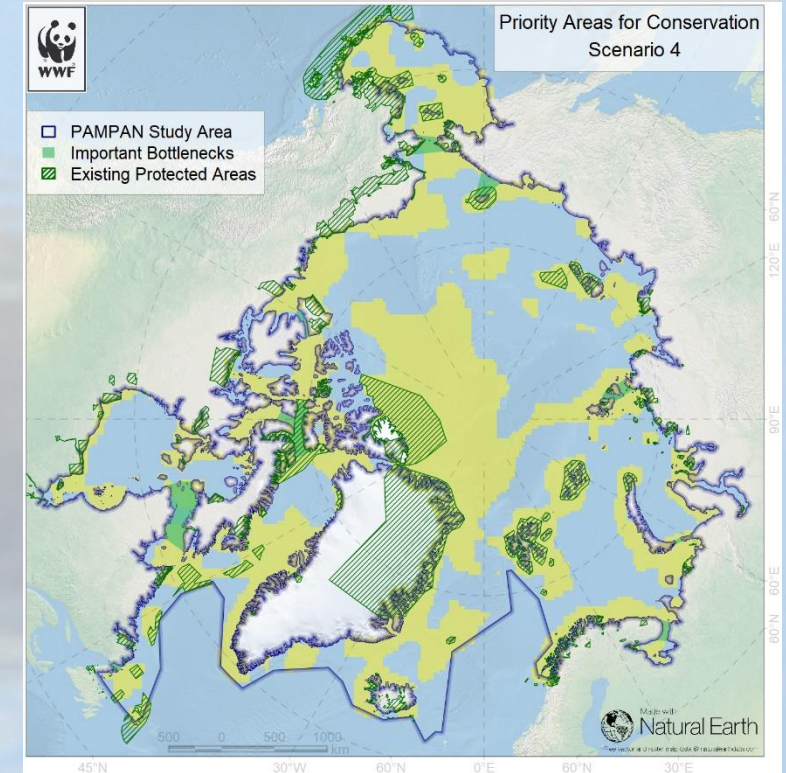
Scenario 3:
medium CF targets throughout



Scenario 1:
medium CF targets throughout, but
high targets in the Central Arctic Ocean



Scenario 4:
high CF targets throughout





PAMPAN – next steps

- Outreach to socialize the project;
- Advocacy engagement with planning and implementation processes;
- Assessments/ refinements of the proposed network to
 - support ecological connectivity
 - support biodiversity resilience and adaptation to climate change
- Overlays with selected human uses to exemplify how process and tools resolve conflicts and facilitate trade-offs.



Thank you!