



Arctic Council Project Support Instrument

(PSI)

Reykjavik September 2019

Annukka Valkeapää, D.Soc.Sc.
Manager, Environment and Technology



PSI idea

is to support the Arctic Council's work within prioritized areas.

- PSI funding is available to all AC WGs
- For projects meeting PSI financing criteria
- Approved by the AC, i.e. by an AC WG
- Donors to PSI take final decision



PSI Focus Areas

follow those of the Arctic council and its working groups:

- Reduction of emissions and releases of pollutants;
- Monitoring and assessing the state of the Arctic environment;
- Conservation of Arctic biodiversity;
- Emergency prevention; preparedness and response;
- Protection of Arctic marine environment;
- Enhancing sustainable development in the Arctic.

PSI Projects

Row Labels	Project	PSI AC working groups	PSI Expert group
1-On-going			
PSI 01/16	Community-Based BC-Health Assessment (Circumpolar)	ACAP	IPCAP
PSI 01/18	PSI Communications (Circumpolar)		
PSI 02/17	Associated Petroleum Gas Flaring - Phases 1 and 2 (Russia)	ACAP	SLCP
PSI 02/18	Arctic Migratory Bird Initiative - Microplastics (Circumpolar)	CAFF	
PSI 03/16	Arctic Migratory Bird Initiative - Two Flyways (Circumpolar)	CAFF	
PSI 03/17	Murmansk - Ozone Depleting Substances - Fisheries (Russia)	ACAP	SLCP
PSI REA	REA Consultants (Russia)		
2-Contracting			
PSI 01/15	Russian Railways - PCB - Component 1 - Feasibility Study (Russia)	ACAP	Waste
PSI 02/16	Obsolete Pesticides - Component 2 - Demo Testing (Russia)	ACAP	Waste
PSI 04/17	Dudinka Municipal Solid Waste - Arctic (Russia)	ACAP	Waste
PSI 05/17	Green Shipping-Russian Arctic Rivers (Russia)	ACAP	SLCP
PSI xx/xx	Mercury Risk Evaluation (Circumpolar)	ACAP	POPs & Hg
3-Pending			
PSI 01/17	BAT in the Arctic (Russia)	ACAP	
PSI xx/xx	Small Allocation Window (SAW) (Circumpolar)		
4-Completed			
PSI 01/14	Karelia - Diesel Black Carbon (BC) (Russia)	ACAP	SLCP
PSI 02/14	Diesel BC - Reindeer Farm (Russia)	ACAP	SLCP
PSI 02/16	Obsolete Pesticides - Component 1 - Feasibility Study (Circumpolar)	ACAP	Waste
PSI 03/14	Mapping Substituting Solutions for Diesel Power Plants (Russia)	ACAP	SLCP
PSI 04/14	Dolgoshchelle Diesel Energy Conversion (BC) (Russia)	ACAP	SLCP
PSI 06/17	PSI Evaluation (Circumpolar)		



Roles of WG & EG

Working Group (WG)

- **Approval of PSI projects** in line with policy priorities of AC
- Participate in project preparation
- Nominate the WG representative(s) to the Project Supervising Committees (PSC)
- Participate in the dissemination of the results
- Approve final reports of the projects

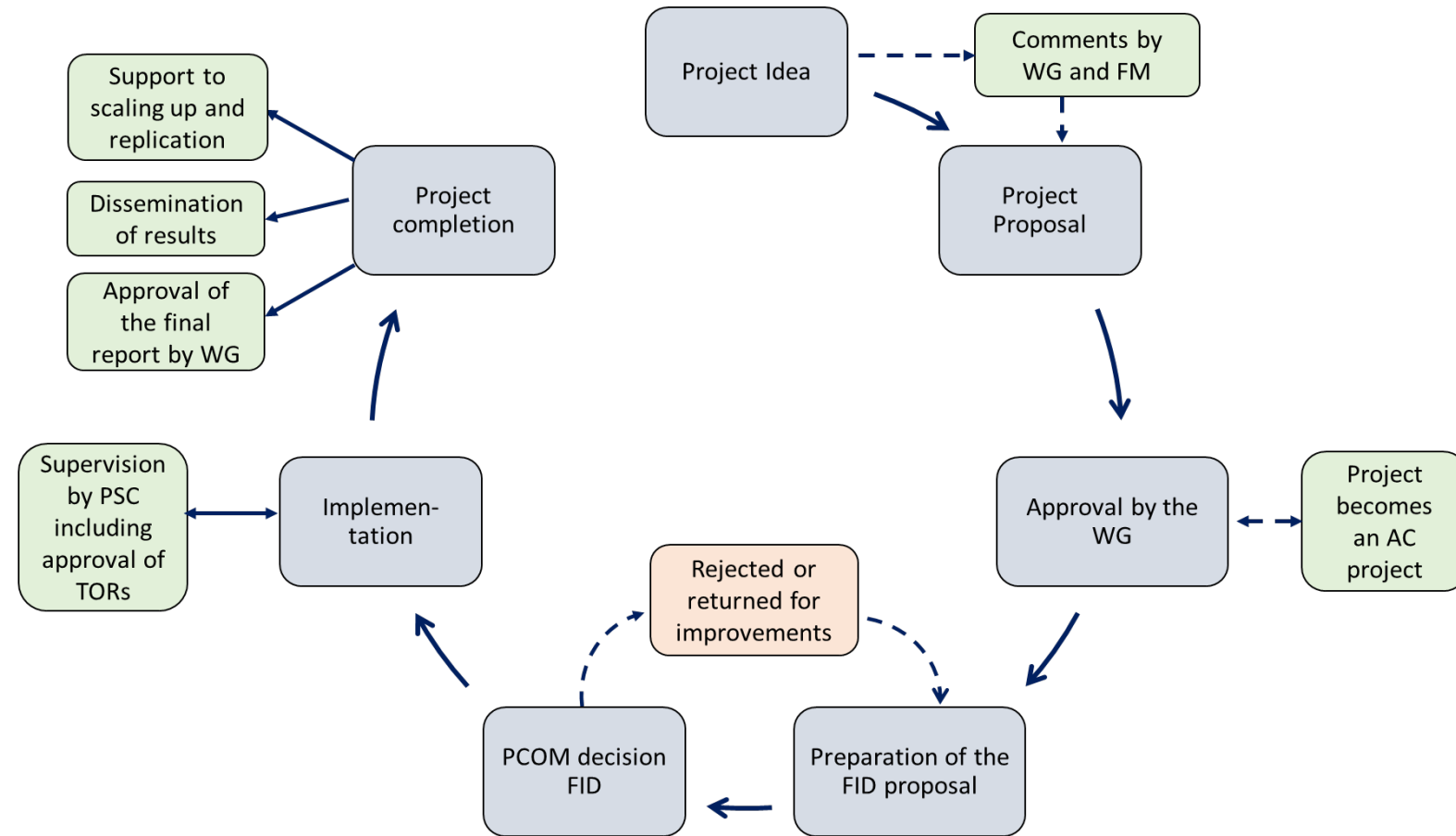
Expert Group (EG)

- **Development of project proposals** and/or participate in project preparation,
- Participation in project monitoring & dissemination of results
- If requested by the WG, the EG provides nominees to the Project Supervising Committee (PSC)

Arctic state or permanent participant presents the **project idea** to a relevant EG/WG.

Project owner may be a ministry, public institution a non-governmental organisation, or a company.

PSI Manual





Thank you!

www.nefco.org