



Arctic Ship Traffic Data (ASTD)

Presentation and demonstration

Shipping Expert Group meeting

October 1 2018

Vladivostok, Russia

PAME II-2018 meeting

Jon-Arve Royset – Norwegian Coastal Administration

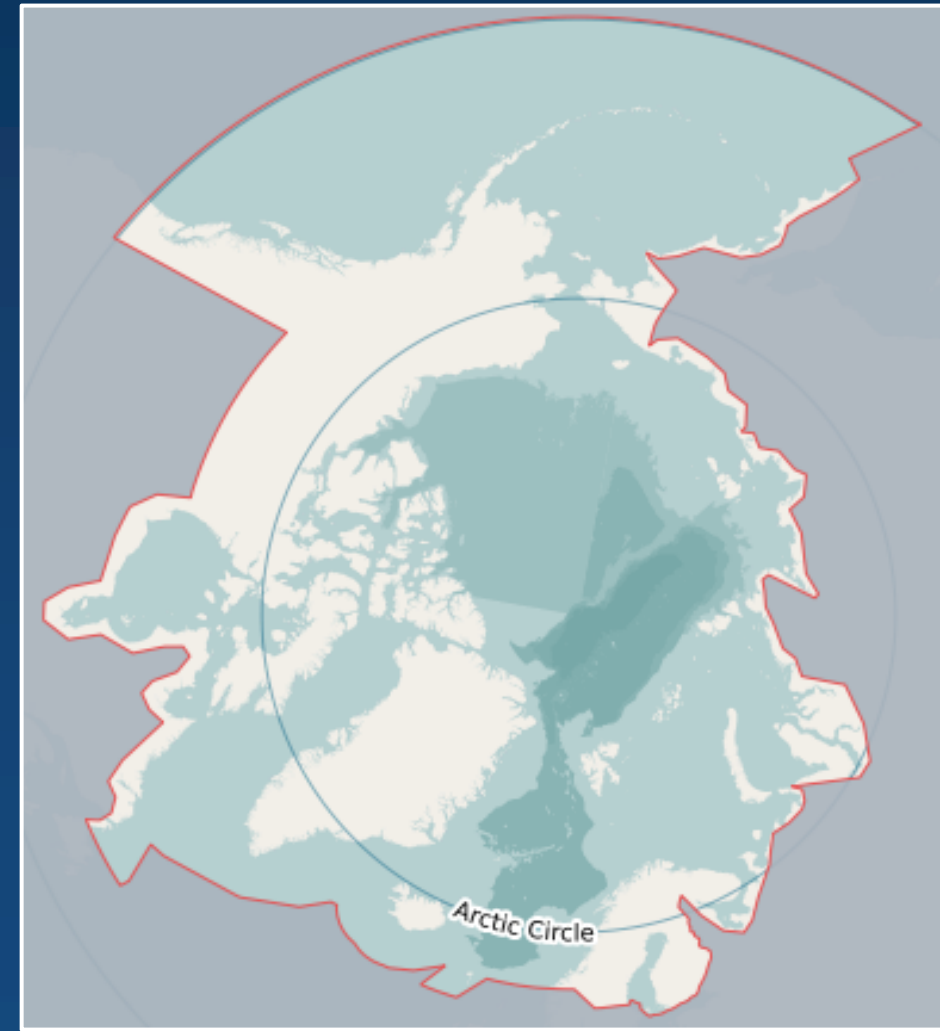
Hjalti Hreinsson – PAME Secretariat

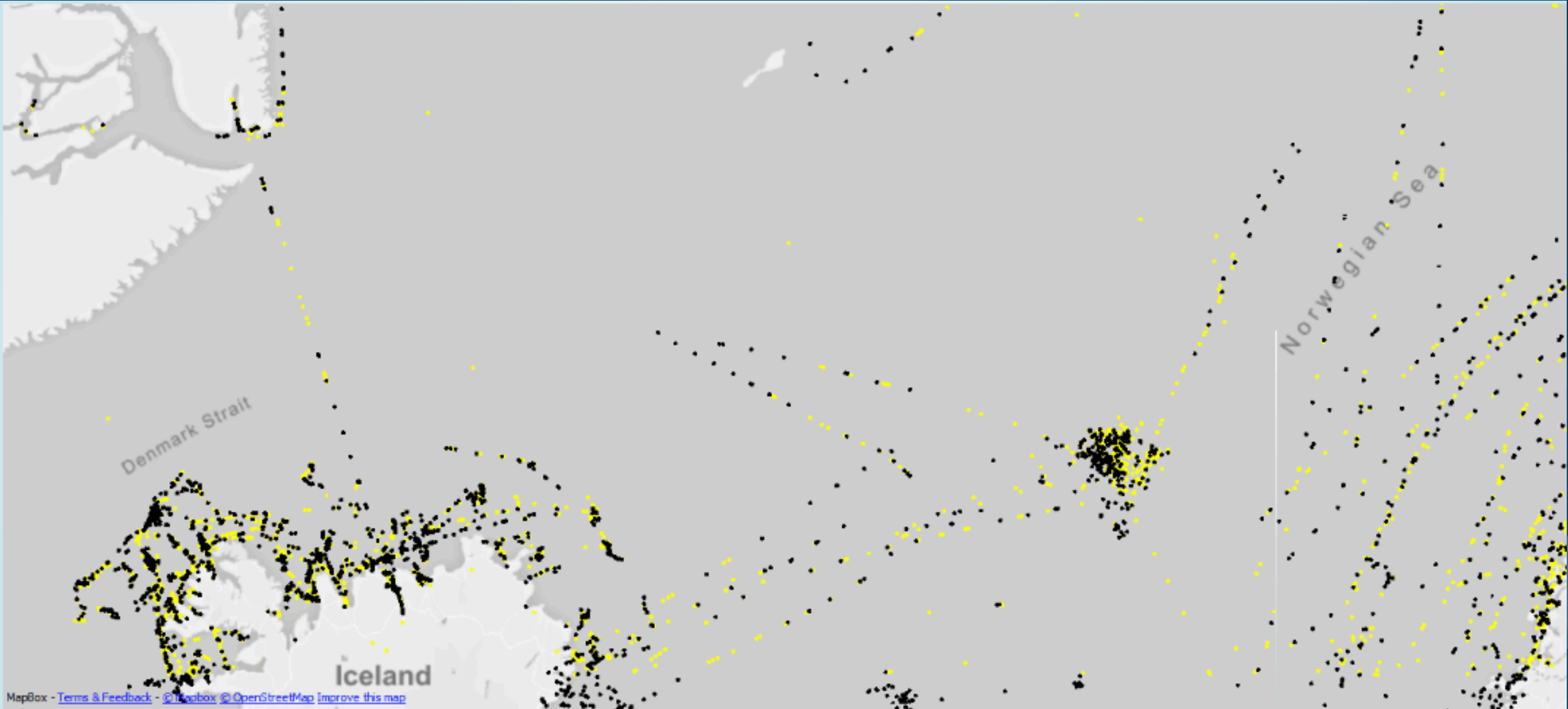
1. ASTD Status

- System is live and working well
- Norwegian Coastal Administration leading work
 - Consultant
 - USA, project lead
 - Support from PAME Secretariat
 - Support from ASTD Expert Group
- Testing at the ASTD workshop in Reykjavík

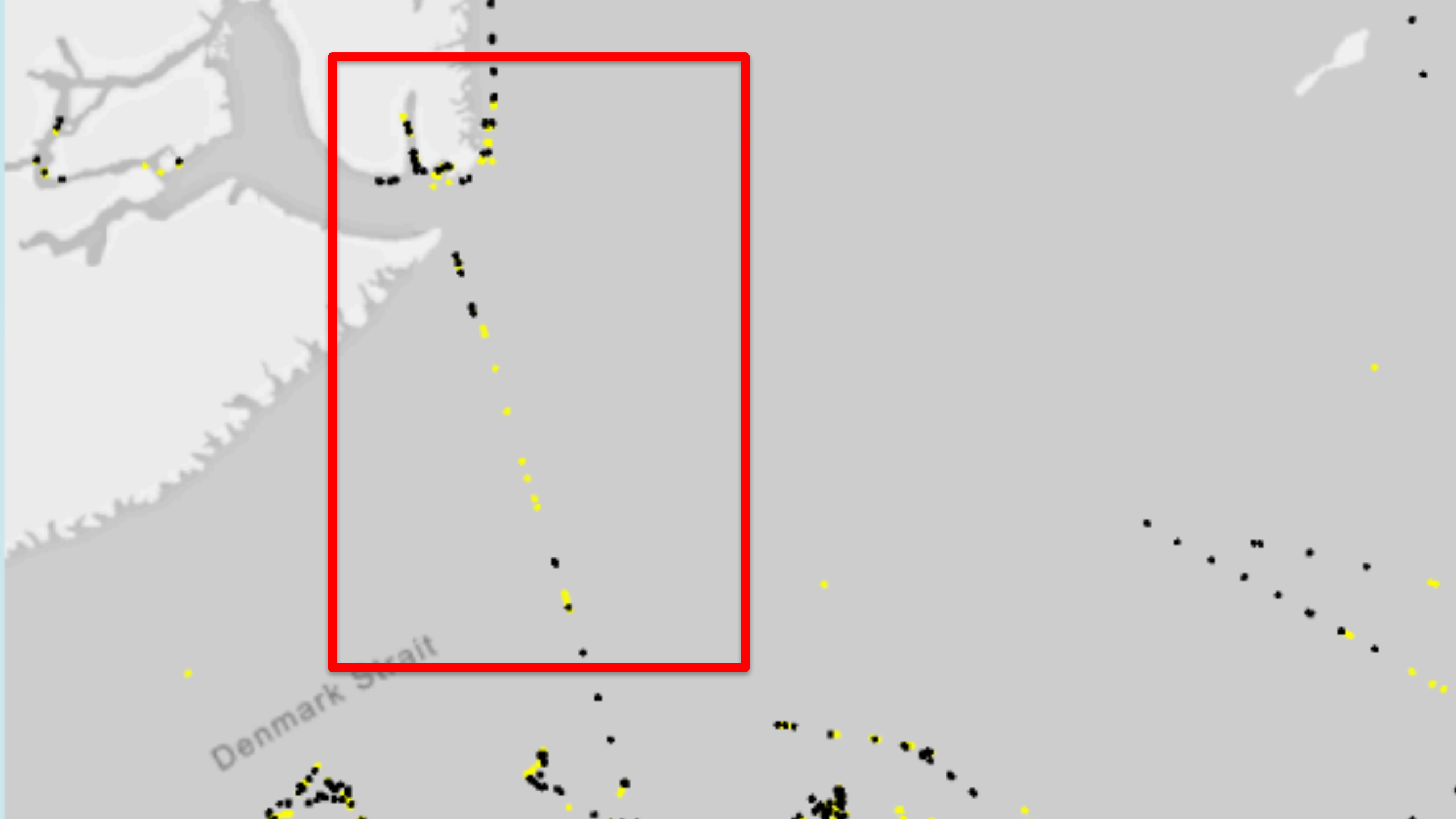
2. ASTD Data

- Data from USA added to ASTD
- Agreement signed to share the data
- Data from multiple satellites and base stations in ASTD
 - Information about ships from IHS Fairplay
 - Additional information from DNV-GL
- Better coverage of the Arctic
- ASTD records 4 million records per 24 hours
 - E.g. ship positions are recorded every 6 minutes





MapBox - [Terms & Feedback](#) - [© Mapbox](#) [© OpenStreetMap](#) [Improve this map](#)



3. ASTD Demonstration

4. ASTD Workshop

- 18 participants from all Arctic states
 - Agenda and presentation on the PAME-II
- Two-fold aim:
 - 1. To get input on the ASTD development from future users
 - 2. To see if the system meets expectation from users
 - 3. To train the super-users on how to use the system
- Several use-cases were performed by participants
 - “Stress-test” on the system
- Very successful
 - And a long to-do list

5. Next steps

- Aim to have access for all users on January 1st 2019
- Main tasks until then:
 - Fixing bugs after testing in Reykjavík
 - Making user-guide – both videos and texts
 - Making online applications for access
 - Adding last minute data and information
 - E.g. ports and passlines

Questions and comments