



BarentsWatch

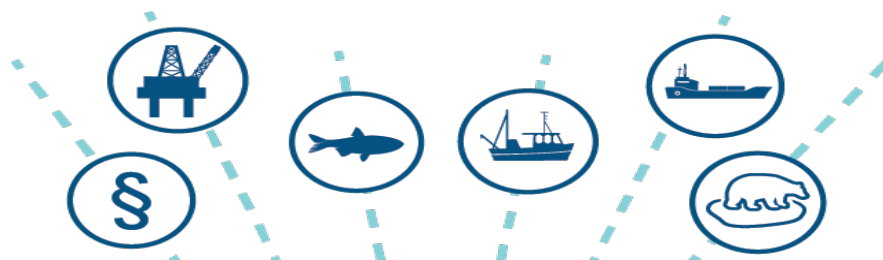
PAME II – 2015 - Kjell Knudsen 15.09.2015

Enhance oceanic and coastal cooperation

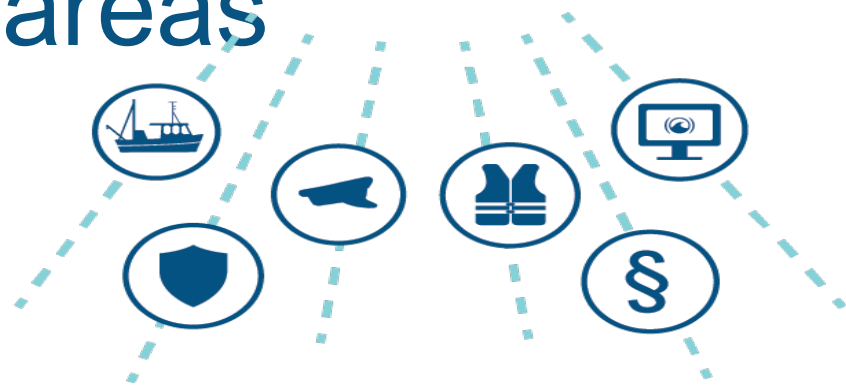


BarentsWatch

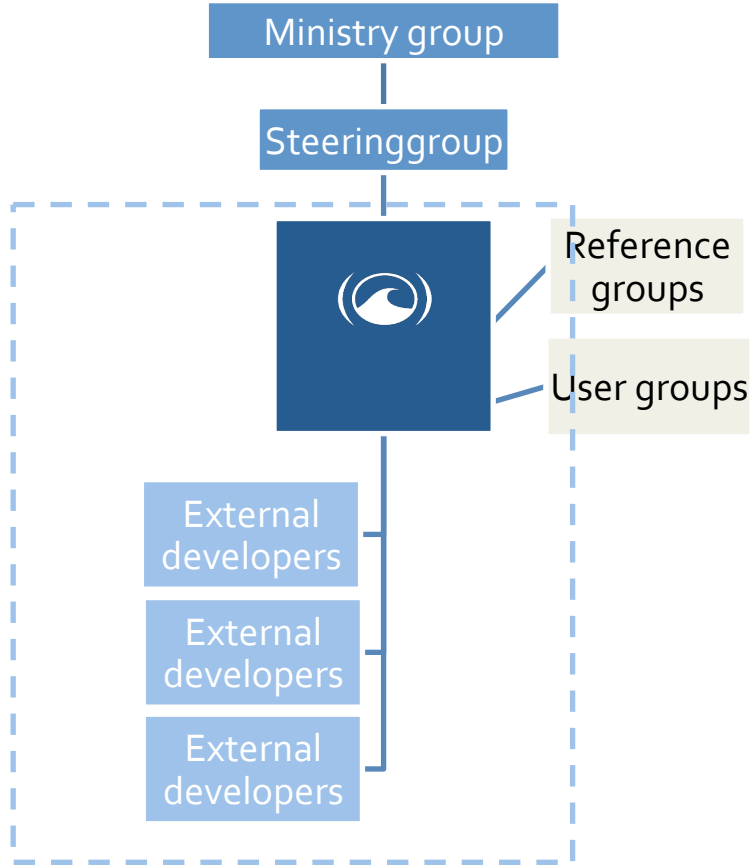




Collect, develop and share
knowledge of the oceanic and
coastal areas



In brief



- Website launched 2012
- Separate project on state budget
- Board of ministries and institution reps
- Organized under Norwegian Coastal Administration, Ministry of Transportation
- 12 employees
- 20-30 full-time external developers
- Apr . 47 MNOK/year
- Office in Tromsø

Government ministries

- Ministry of Climate and Environment
- Ministry of Defence
- Ministry of Education and Research
- Ministry of Finance
- Ministry of Foreign Affairs
- Ministry of Justice and Public Security
- Ministry of Petroleum and Energy
- The Ministry of Trade, Industry and Fisheries

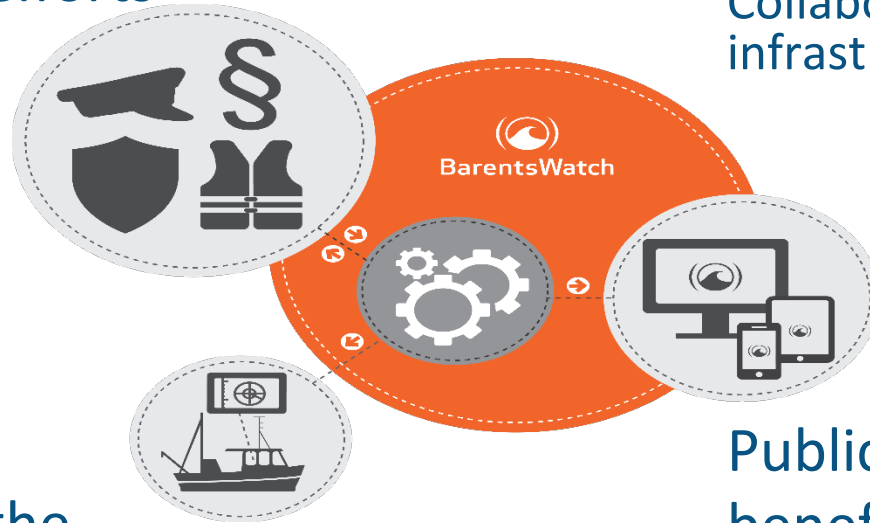
State administration agencies and research institutes

- Bioforsk
- CICERO
- Customs
- The Directorate for Civil Protection and Emergency Planning (DSB)
- The Joint Rescue Coordination Centres in Southern Norway and Northern Norway (HRS)
- Institute of Marine Research
- National Police Directorate
- NILU
- Norut
- Norwegian Armed Forces
- Norwegian Defence Research Establishment
- Norwegian Environment Agency
- Norwegian Maritime Authority
- Norwegian Petroleum Directorate
- Norwegian Space Centre
- SINTEF
- The Directorate of Fisheries
- The Governor of Svalbard
- The Nansen Environmental and Remote Sensing Center
- The Norwegian Coastal Administration
- The Norwegian Institute for Water Research (NIVA)
- The Norwegian Mapping Authority
- The Norwegian Meteorological Institute

The collaboration system

Improving efficiency in operational efforts

Collaboration venues and infrastructure solutions



Services for the professional user

Public services that benefits operational efforts and other professional users

Society benefits

Improved
ocean
monitoring

Increased
maritime
safety

Streamlining

Development

Increased
value and
quality

Conflict
attenuation

BarentsWatch promotes collaboration and streamlines
management of oceanic and coastal areas

Improving efficiency in operational efforts



Photo: 330 Skvadronen



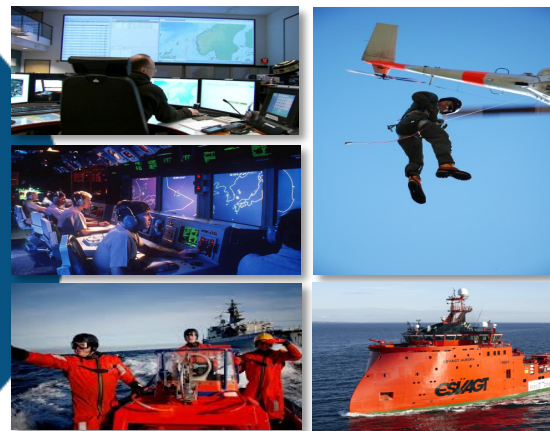
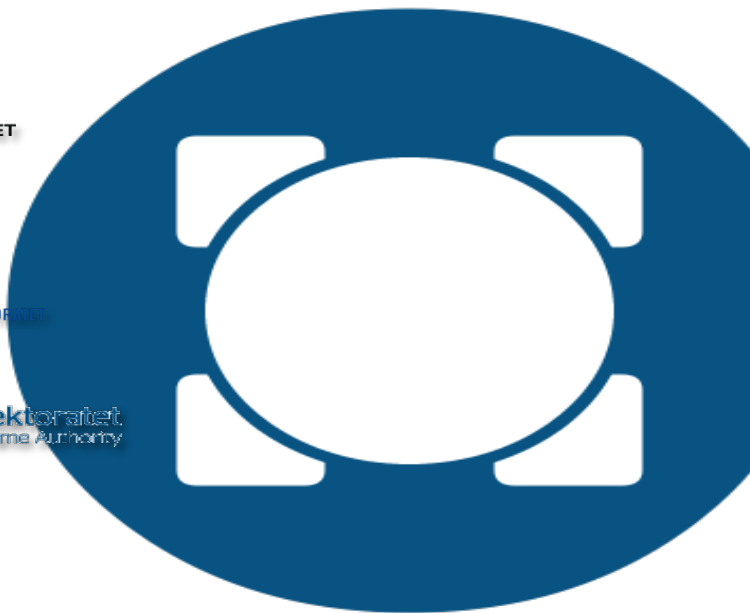
Increase the maritime situational awareness

- Security
- Safety
- Economy
- Environment



Photo: Finnmark Dagblad

Common resource register

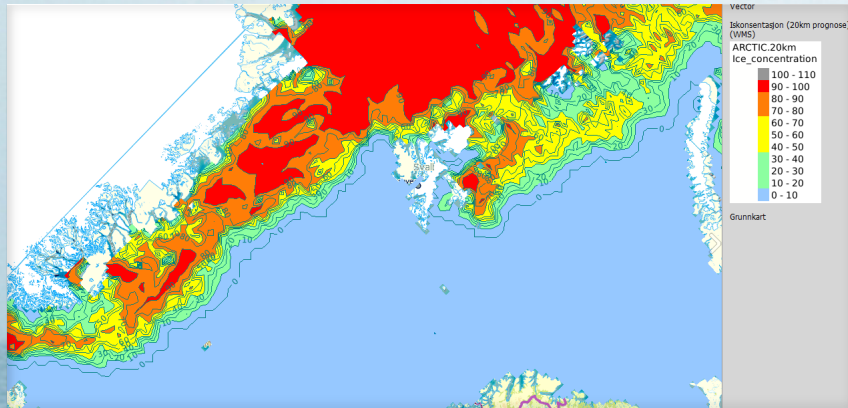


Services for the professional user

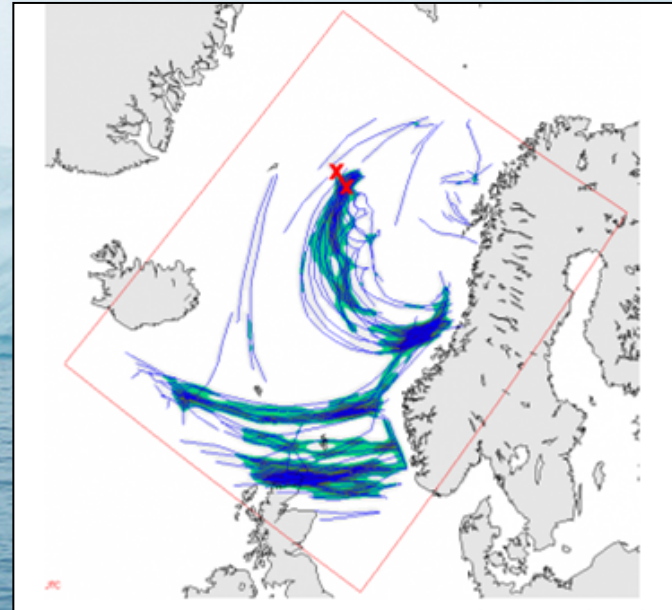
E-navigation and Marine Spatial Planning

Safer operations in polar regions

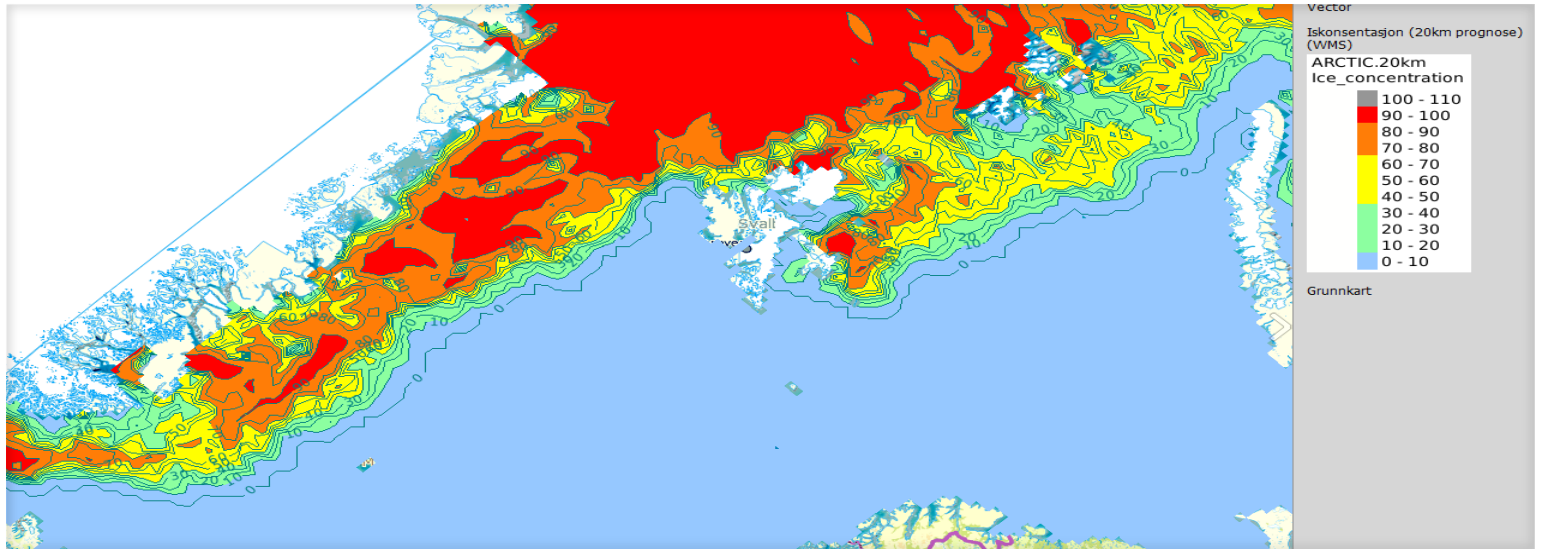
Ice-status and warnings



Forecasting of polar lows



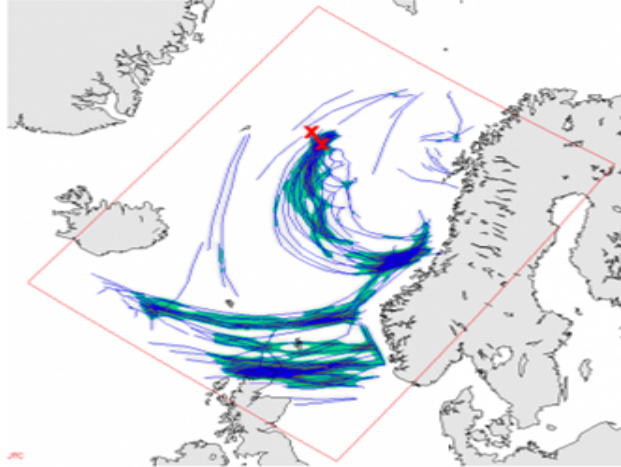
Ice-status and warnings



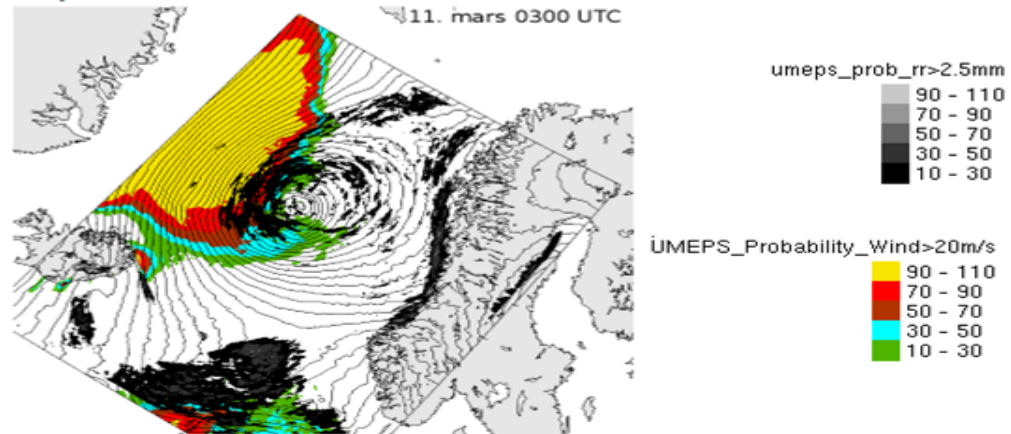
Forecasting of polar lows



Forecasting of polar lows



Figur 1: I figurene kan du se mulige utviklinger til det polare lavtrykket. Sannsynlig bane for polart lavtrykk er angitt i blåtoner, muligheten er større med mørkere blåfarge. De røde kryssene viser hvor lavtrykket er observert til nå.



Figur 2: Polare lavtrykk er assosiert med alvorlig vær. Du kan derfor også se vindstyrke over liten storm og kraftig nedbør. Kraftig nedbør medfører også dårlig sikt. Ethvert værvarsel er forbundet med usikkerhet av varierende grad. Fargene og gråtonene angir derfor hvor treffsikkert varslet er for hhv.

Public map layers for chart plotters

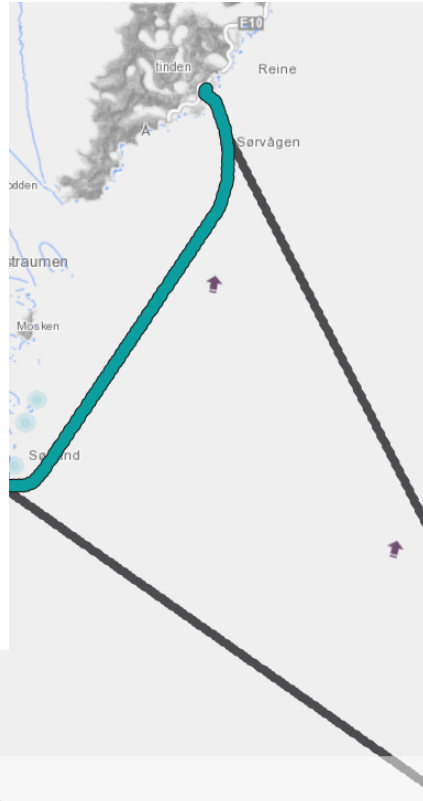
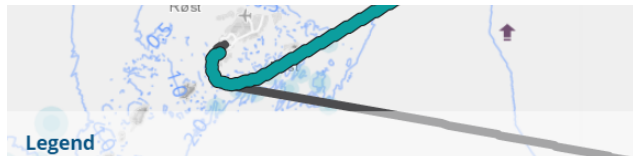
- Cooperation with fishermen, system vendors and data owners
- API/machine interface available
- User desire for centralised data submission in the future (ala SafeSeaNet)

The screenshot displays the BarentsWatch interface for 'FiskInfo - Maps for chart plotters'. The main map shows 'Fishing facilities from Kystvakten' with various colored markers (red, blue, purple) on a nautical chart of the Barents Sea. A secondary layer, 'Iceedge from Meteorologisk Institutt', is visible at the bottom. The interface includes a search bar, a 'Download' button, and a 'Format' dropdown menu with options: Olex, Shape file (can be used on Olex), MaxSea (not TimeZero), JSON, and TELCHART. The file size is noted as 'about 51 KB'. A note states: 'The map will not be downloaded, only the markers.' The BarentsWatch logo is in the top left corner.

Wave forecast for shipping fairways

- Wave data + bathymetry (underwater topography) for selected areas and fairways
- Plans to combine other data in the same view

- Ice
- Wind
- ++



National Port Overview

Ports - BarentsWatch x
www.barentswatch.no/en/Ports/#&detailedSearch&harbour

BarentsWatch

ENVIRONMENT SHIPPING OIL & GAS MARINE

Overview of ports - Beta

The Overview of ports shows detailed information about ports. Search for ports based on the facilities of individual quays. Information are not complete.

Search Filter

Measurements

Ship length m
Ship height m
Depth m
Bollard stre... t



Show ports

Quays ▼
Facilities ▼
Infrastructure ▼
Waste reception ▼
Bunker types ▼
Port type

Narvik

Core port

The information is provided by the port
Last updated: 15. August 2014



Position: **68° 25,36.15'N**
17° 25,27.13'E

UN/LOCODE: **NONVK**

Port of Narvik connects the Atlantic to the Pacific via train through Sweden, Finland and Russia. 18 million metric tons shipped from Port of Narvik in 2011, makes it the the largest dry bulk port in Norway. Estimated volume in 2020, is about 60 million metric tons.

Photo: Narvik Havn KF

Port information **Quays** **External services**

About the port

Number of mobile cranes	4	
Number of reach stackers	2	
Number of piers	15	

Vessel

MS Rombak IMO number: 7504342 Call signal: LEBO Tonnage (grossstn): 506 Engine power (hp): 4900	MS Rallaren IMO number: 7325667 Call signal: LLVE Tonnage (grossstn): 503 Engine power (hp): 3600	MS Anna Rebecka IMO number: 9424417 Call signal: LCON Tonnage (grossstn): 276 Engine power (hp): 3600
--	--	--

CONTACT INFORMATION

+47 76 95 03 70
post@narvikhavn.no
http://www.narvikhavn.no

Duty phone (24h)

+47 76 95 03 75

VHF channel

14 / 16

Visitor address

8514 Narvik

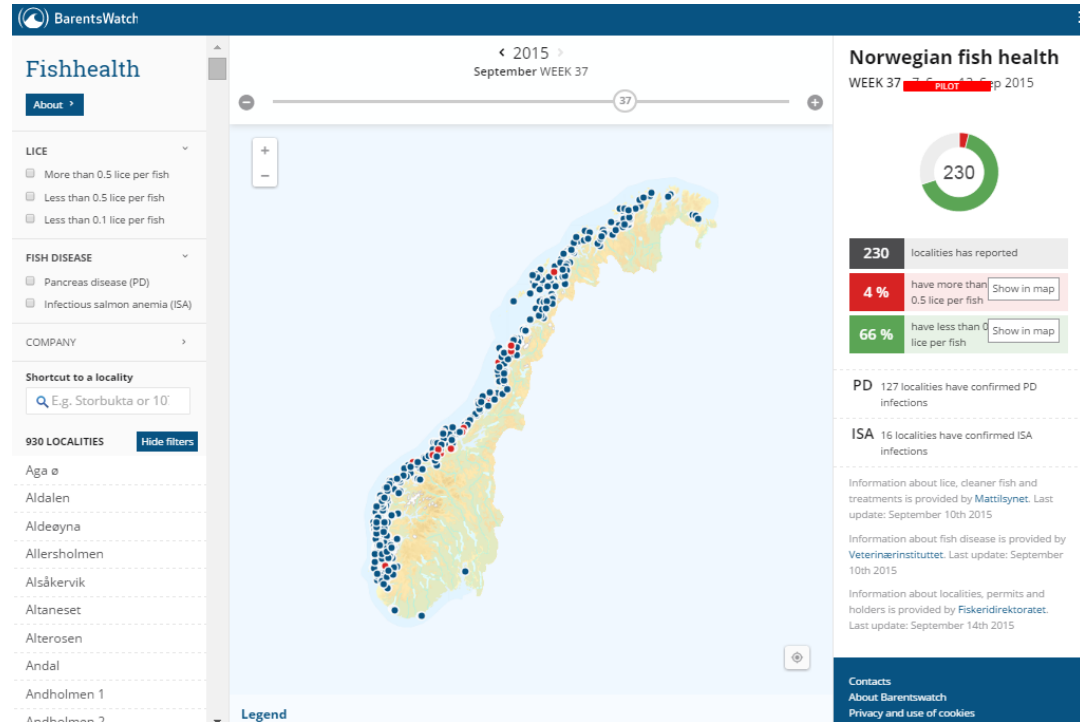
Sortland
Stokmarkne

More about the port

BarentsWatch

"Fish Health" - Status for aquaculture

- Salmon lice and diseases
- Launching 15.09
- Starting as internal tool in Norwegian Food Safety Authority



Marine spatial planning

Goals

- Marine Spatial Management Tool to enable more effective management plan updates
- Better overview of political decisions and actions
- More transparency, openness and increased involvement of marine management stakeholders

Products

- Common map tools
- Standardised map services
- Transparent access for public users
- Catalogue service
- Standardised data content
- Improved processes



Oceans of knowledge



BarentsWatch