

PAME I-2015 Agenda Item 4.6(b)

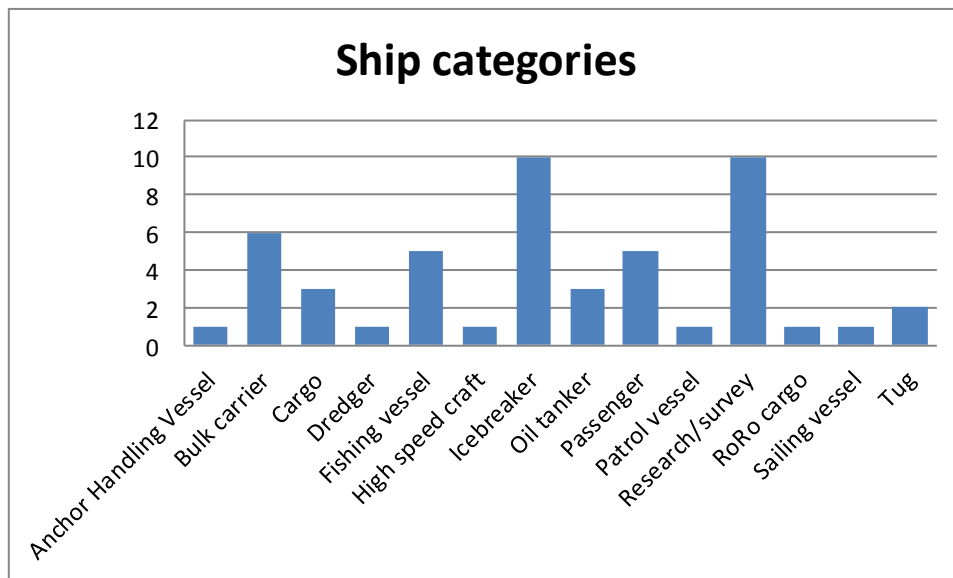
AMSA II(D)

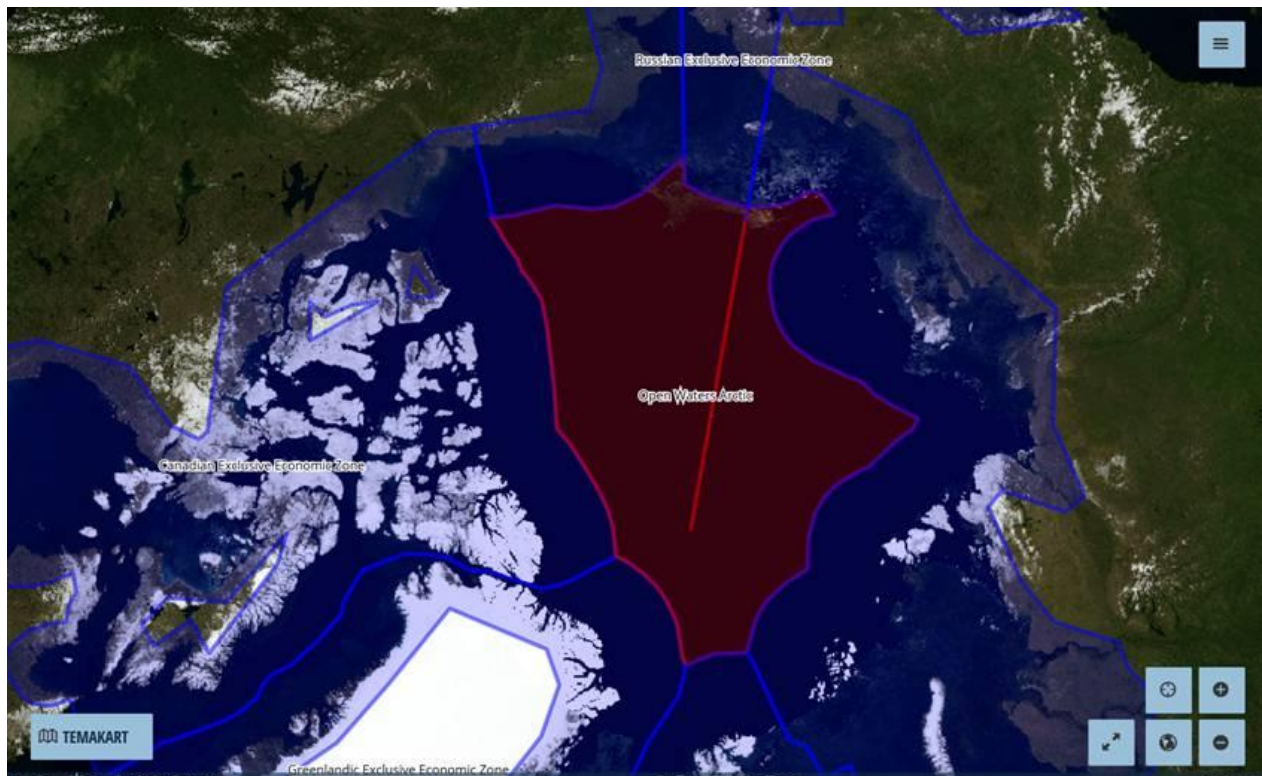
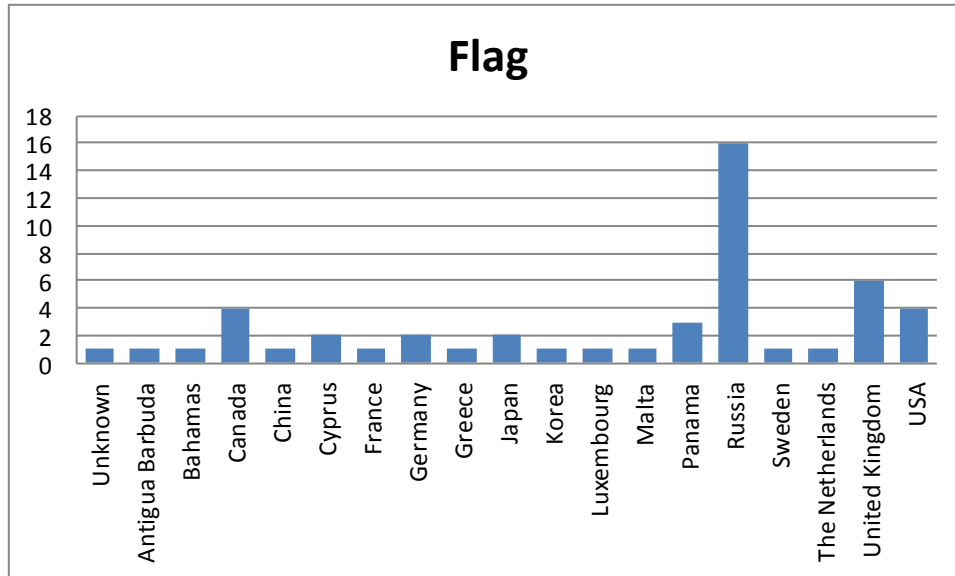
Update on the status of current ship traffic in the high seas area of the Central Arctic Ocean – submission by Norway

RoD from PAME II-2014, agenda item 4.5: *Continue to seek current ship traffic data from the high seas of the Central Arctic Ocean*

Update on the status of current ship traffic in the high seas area of the Central Arctic Ocean

Based on satellite AIS data the ship traffic in the high seas area of the Central Arctic Ocean for 2014 has been reviewed. A major criterion for inclusion of data from a given ship has been the registration of at least three positions within the high seas area. A total of 50 unique vessels have been registered. The data have been processed through Havbase.no.





The area marked in red is defined as the high seas area used in the review.