



ICES support to Arctic

ICES Strategic Plan launched 2014



The strategic plan has a firm commitment to the Arctic and collaboration takes place on many topics, including:

- integrated observing systems
- ecosystem assessments
- survey coordination
- marine spatial planning




How can we move forward together?

Develop an integrated, interdisciplinary understanding of the structure, dynamics, and the resilience and response of marine ecosystems to change

Understand the relationship between human activities and marine ecosystems, estimate pressures and impacts, and develop science-based, sustainable pathways

Evaluate and advise on options for the sustainable use and protection of marine ecosystems

Main goals of ICES Strategy



ICES works with several international groups active in Arctic science:

Arctic Council

Arctic Monitoring & Assessment Programme
(AMAP)

Conservation of Arctic Flora and Fauna (CAFF)

Protection of the Arctic Marine Environment
(PAME)

International Arctic Science Committee (IASC)

Third International Conference on Arctic
Research Planning ICARP (III)

Association of Polar Early Career Scientists
(APECS)

Transition to Advice

- Regional Ecosystem Benchmarks
- Overviews to inform (working with science groups)
- Integrated monitoring (with surveys & oceanography)
- Robust and Functioning Indicators
- Operational objectives from environmental policy incorporated into integrated indicators.

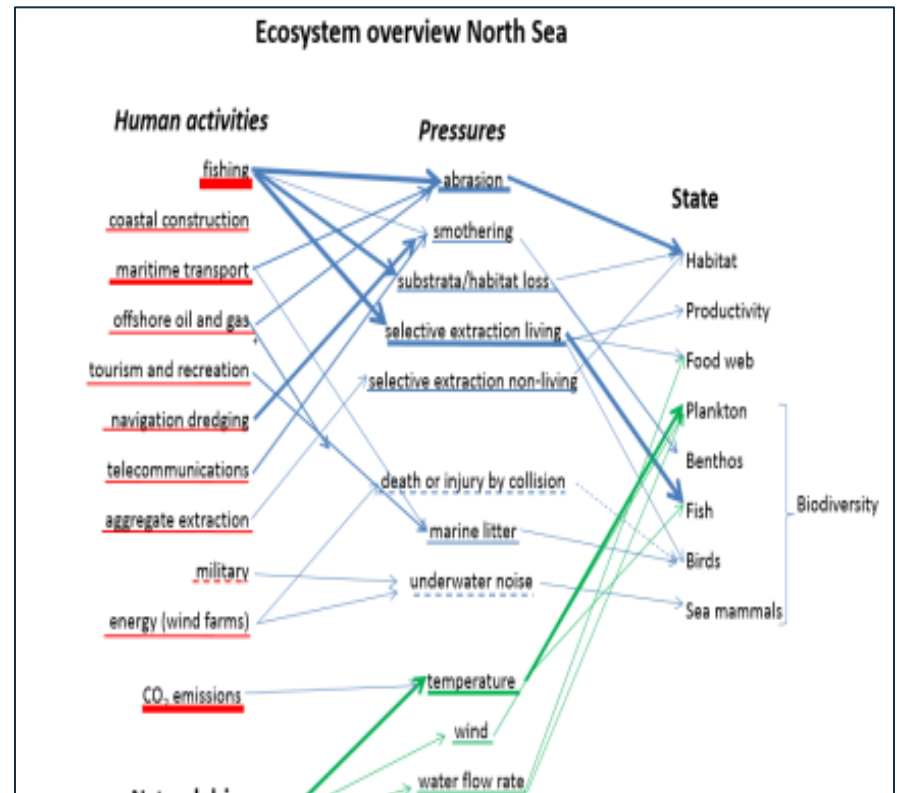
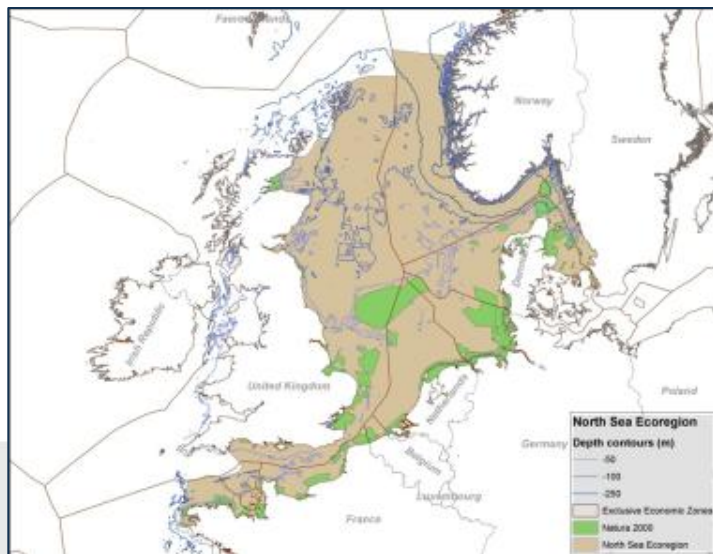




Integrated Ecosystem Assessment Groups in
ICES

ECOSYSTEM OVERVIEWS

- Ecoregion description
- Key signals within the environment and ecosystem
- Activity and pressure
- State of the ecosystem



Upcoming activities:
scoping for objectives with RSC
identifying indicators & thresholds
risk analysis
management strategy evaluations



**OSPAR
COMMISSION**

*Protecting and conserving the
North-East Atlantic and its resources*



- **WKRISCO (November 17-20, Copenhagen):**
Workshop on Regional Seas Commissions and Integrated Ecosystem Assessment Scoping

[review IEA methods and scope with OSPAR and HELCOM science needs for regional assessments]



Areas for increased cooperation ICES/AMAP/PAME

- Pollution assessment
- Climate variability and climate change
- Food webs and trophodynamics
- Approach and methodology for IEA
- Basis for scientific advice for management in an EA context

Actions:

a joint ICES/AMAP workshop in 2015 to address the issues of approach and methodology for carrying out IEA for the Arctic Ocean and adjacent Arctic shelf LMEs

Followed by a WG for IEA of the Arctic Ocean in 2016

Greetings from ICES Science Committee (SCICOM)
Yvonne Walther - Chair

