

ARCTIC SHIPPING PRIORITIES

Arctic Shipping Best Practice Information Forum

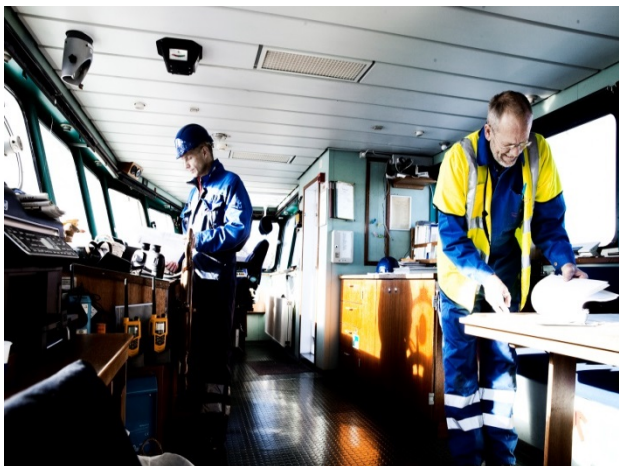
**Pernille Palmelund Sørensen
Maritime Regulation and Law
Danish Maritime Authority
pps@dma.dk**



Our mission

To promote health and safety on clean seas and to effectively strengthen the competitiveness of and employment in the maritime industries.

Safety

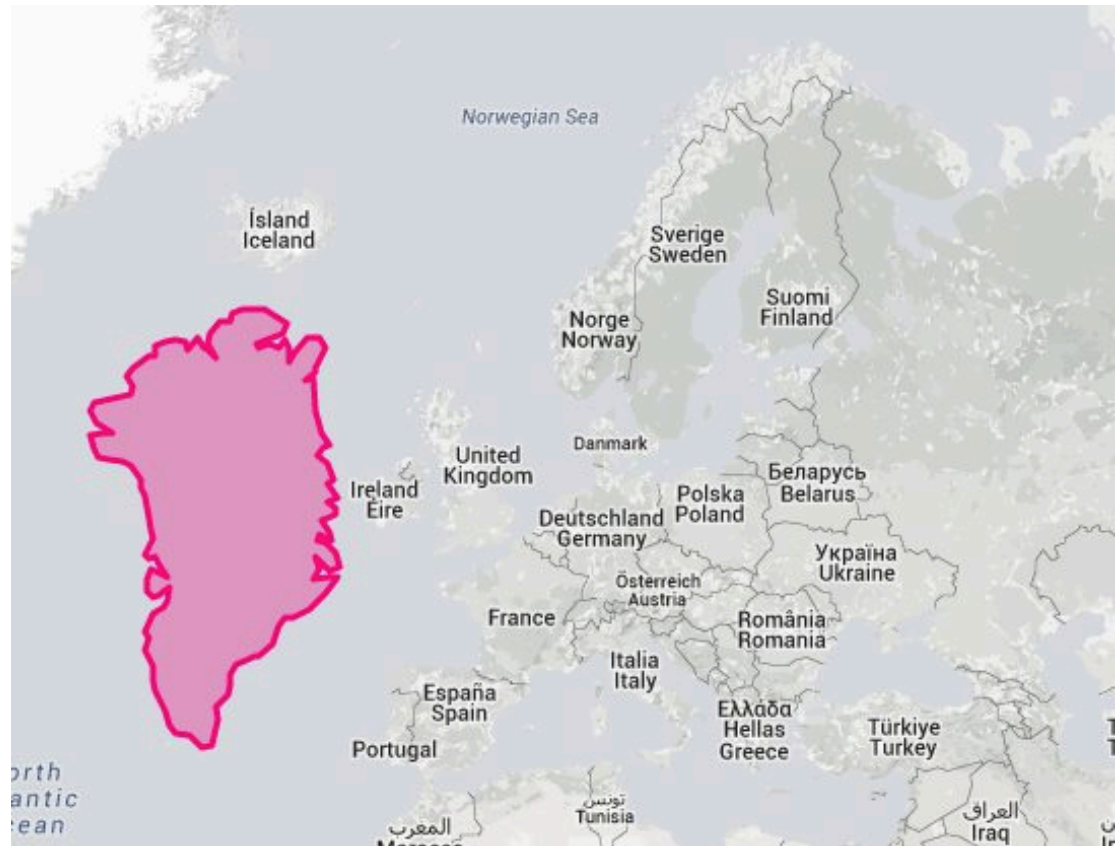


Growth



Agenda

- DMA approach
- Cruise shipping
- Mining activities
- ASBPIF



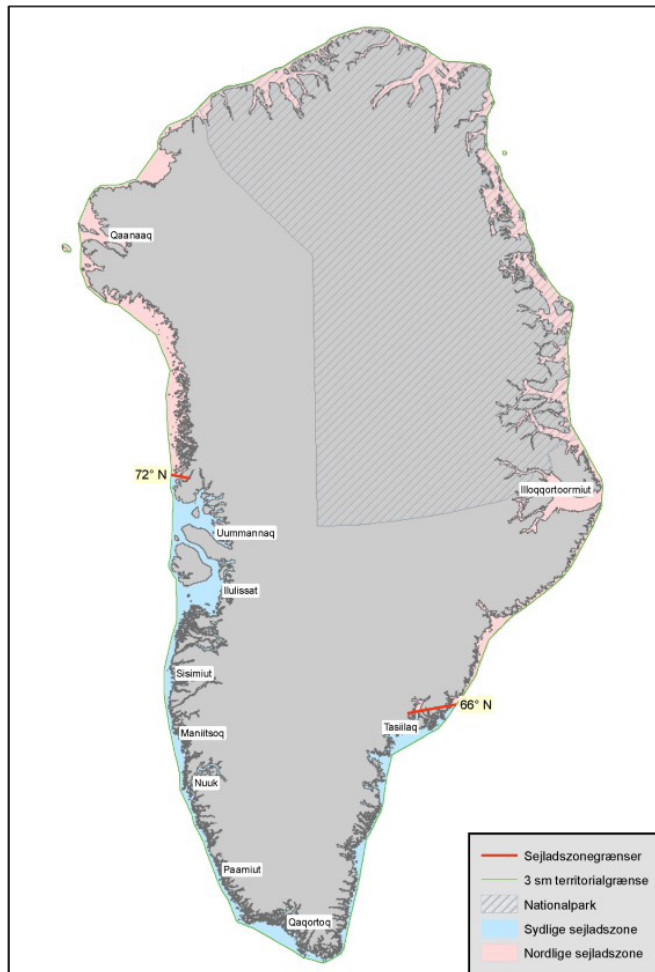
IMO Polar Code

- Prevention is key to safety in the Arctic



Cruise shipping in Greenland





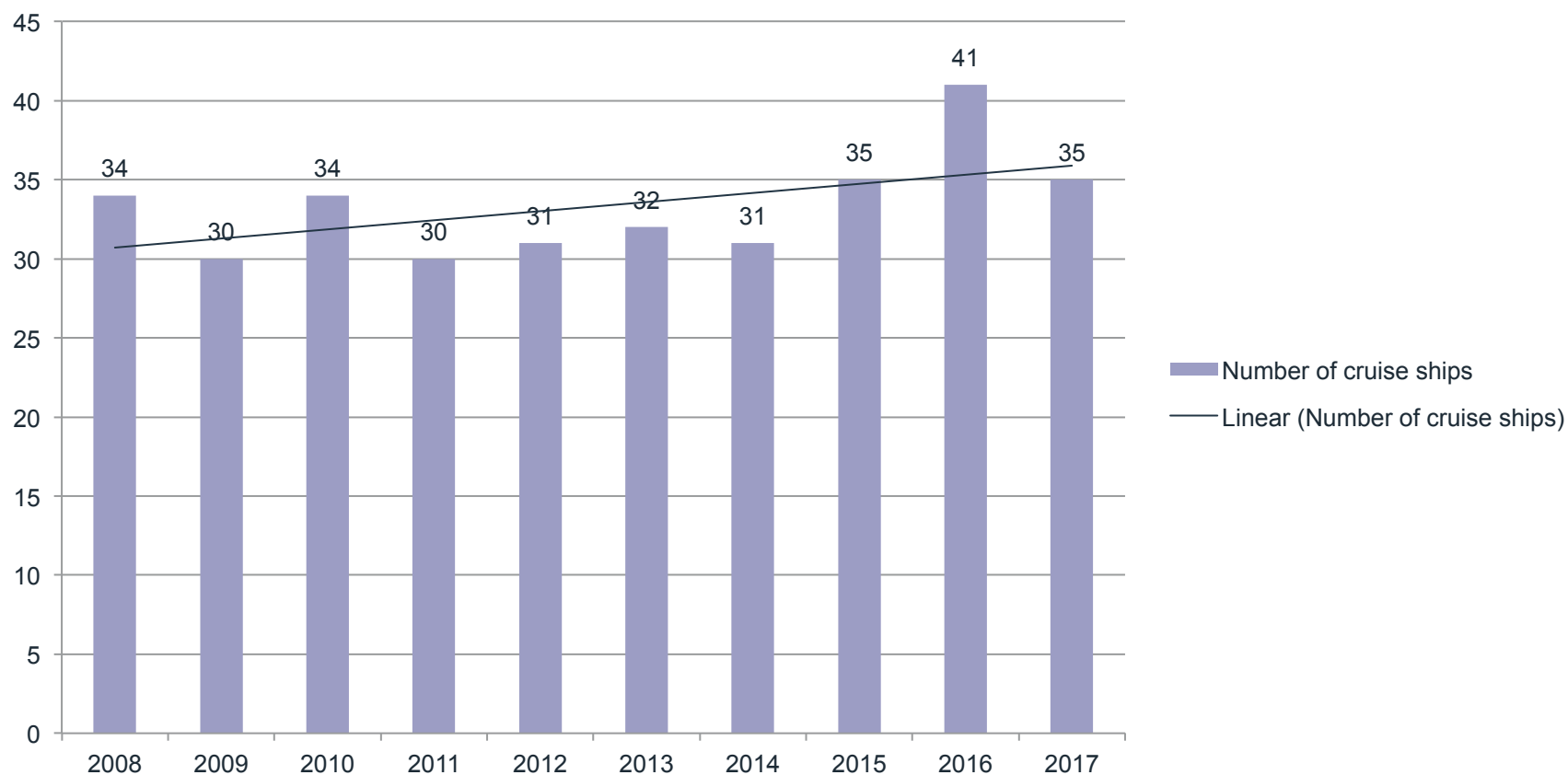
New orders on safety of navigation and pilotage in Greenland



Cruise ships May-September 2016



Planned cruise ships to Greenland



Safety issues – big vs. small

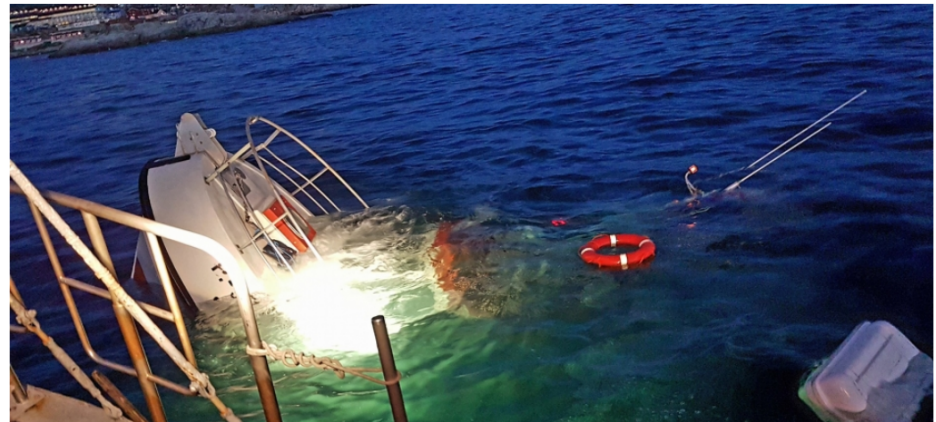


The Northwest Passage
Expedition Cruise 2016

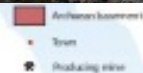
Disaster averted

23 cruise passengers rescued after local boat sinks

Locally hired vessel operating in Greenland's Ilulissat Icefjord struck something in water before sinking, investigators say



August 15, 2016 - 5:13am - By The Arctic Journal



Suggestions for ASBPIF web portal

- Legal texts implementing international regulations
- Additional national regulation
- Information on mandatory ship reporting systems
- IMO guidelines
- Information on marine incidents
- SAR contact points

Thank you for your attention. Questions?

