

A photograph of a large whale and a smaller calf swimming in dark water near ice floes. The whale is dark grey and the calf is lighter grey. They are swimming towards the left. The water is dark blue/black. There are white ice floes on the right and left sides of the frame.

Working Toward Resilient Marine Protected Area Networks In the US Arctic

**Lauren Wenzel
National Marine Protected Areas Center**

Building Resilience

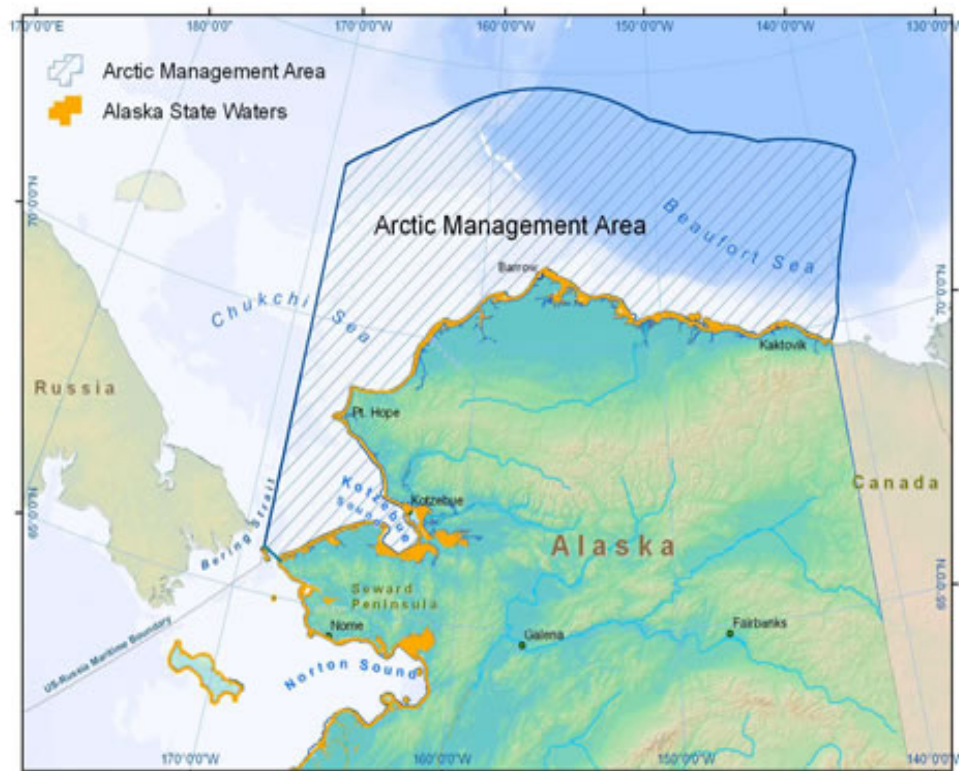
- Managing existing MPAs
- Designating “other measures”
- Identifying important blue carbon habitats
- Beginning the dialogue on resilience

Managing Existing MPAs

- ADD INFO HERE

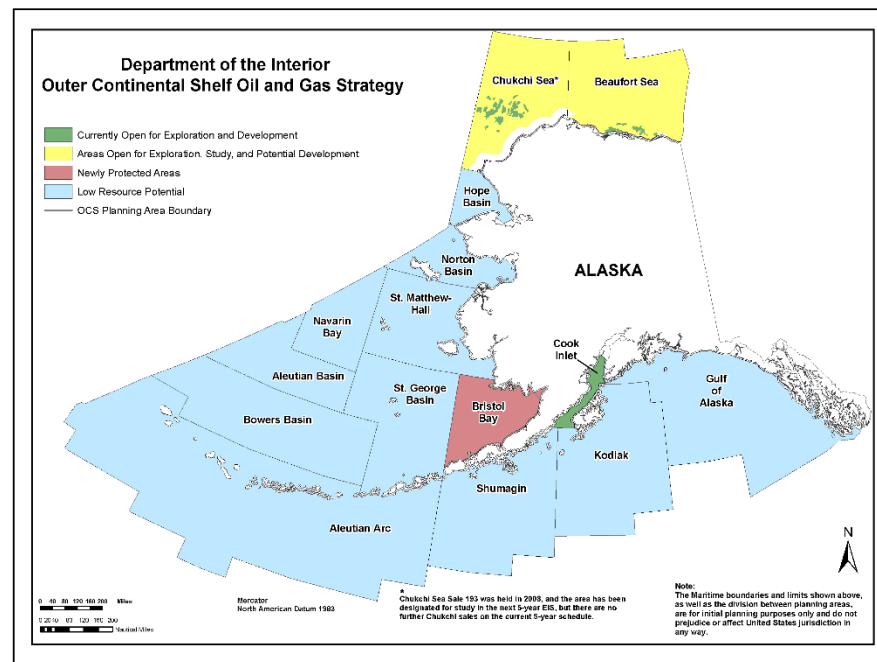
Arctic Fishery Management Plan

- Closes all federal waters the Arctic (3-200 nm) to commercial fishing (2009)
- Precautionary, ecosystem based approach
- Aims to establish a sustainable management framework for future fishing
- Does not regulate



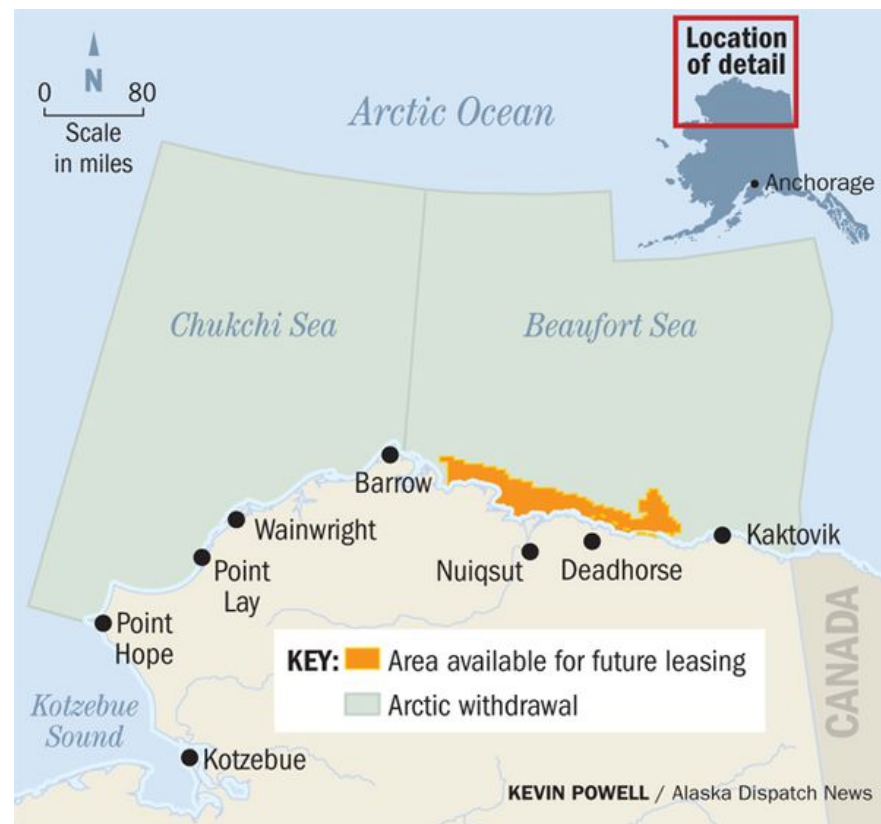
Oil and Gas Exclusion Areas

- Bristol Bay withdrawn from oil and gas leasing (2010)
- Prime salmon habitat and fishery



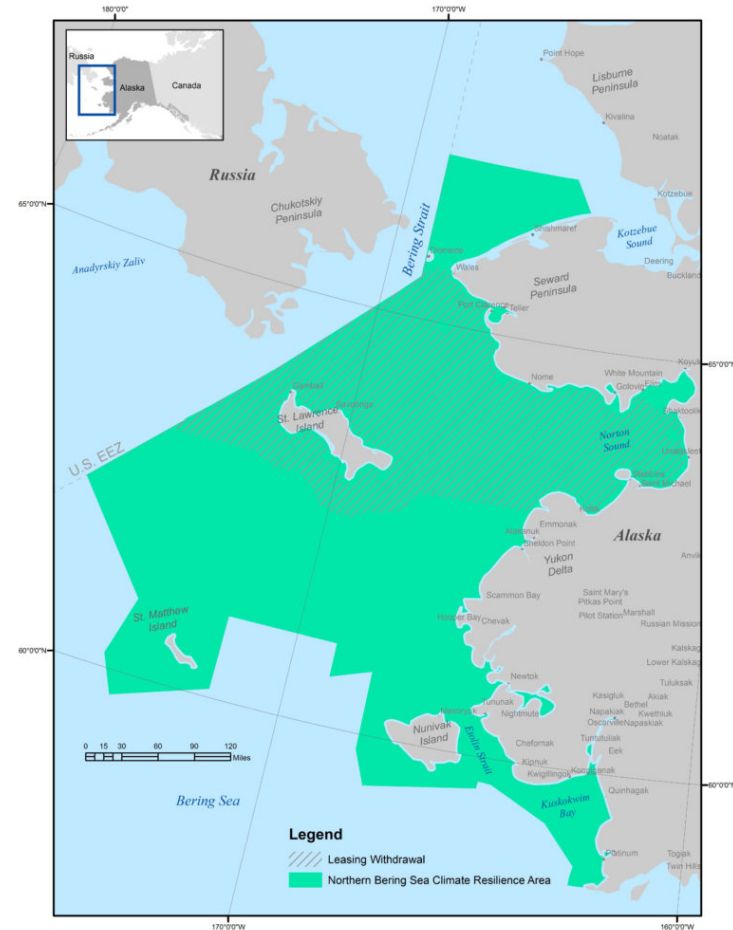
Oil and Gas Exclusion Areas

- As of Dec 2016, withdraws most Arctic waters to oil and gas development
- Importance of the area to wildlife and for indigenous subsistence cited



Northern Bering Sea Climate Resilience Area

- Withdraws areas from oil and gas leasing
- Establishes federal task force and tribal council to address:
 - Ship pollution
 - Ship routing
 - Oil spill preparedness
 - Habitat protection (maintain existing bottom trawling prohibition)



Identify Blue Carbon Habitats

- Working with Commission for Environmental Cooperation to map blue carbon habitats across North America
 - Salt marshes
 - Seagrasses
 - Mangroves



Coastal Resilience Workshops

- Led by Landscape Conservation Cooperatives
- Focused on community resilience and links to ecological resilience
 - Reduce risk to human lives
 - Mitigate disaster impacts
 - Leverage government resources and enhance collaboration
 - Protect Alaska's cultural heritage
 - Enhance vitality of hunting & fishing resources



MPA Federal Advisory Committee

- Guidance on Principles for MPA Networks in the US Arctic
 - Inclusive process
 - Beginning the dialogue on MPA networks
 - Recognizing climate as a driver
- <http://marineprotectedareas.noaa.gov/fac/products/>

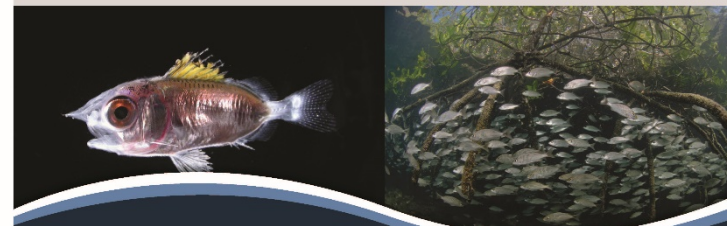
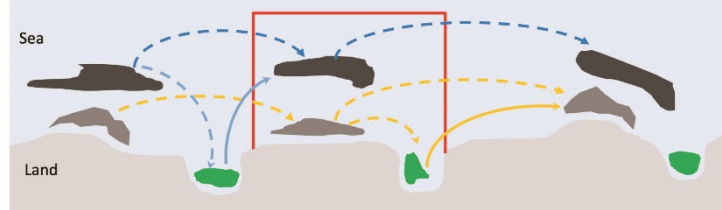


MPA Federal Advisory Committee

- Guidance on Spatial Connectivity for MPA managers
- Summarizes science
- Provides action agenda
- <http://marineprotectedareas.noaa.gov/fac/products/>

Harnessing Ecological Spatial Connectivity for Effective Marine Protected Areas and Resilient Marine Ecosystems:

SCIENTIFIC SYNTHESIS AND ACTION AGENDA



Recommendations from the
Marine Protected Areas Federal Advisory Committee