

Oden

Arctic class Icebreaker DNV 1A1 POLAR-20, or Canadian ice class CAC 2

Owner: Swedish Maritime administration (SMA)

Builder: Götaverken, Arendal, Sweden Delivered 1988 and is one of a kind.

Oden is one of five Swedish icebreakers operated by the Swedish Maritime Administration. Icebreaker ODEN is designed for escort ice-breaking and for research operations in the polar regions. ODEN is very flexible and can carry scientific equipment, container labs, frozen storage, containers, deep drilling equipment for geological purposes, etc.

Main Characteristics

Length over all 107,8m

Max beam: 31,0m

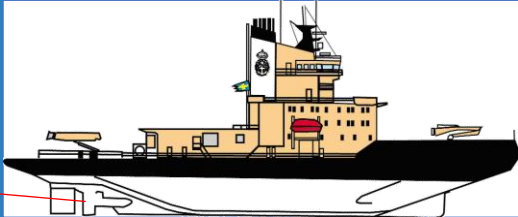
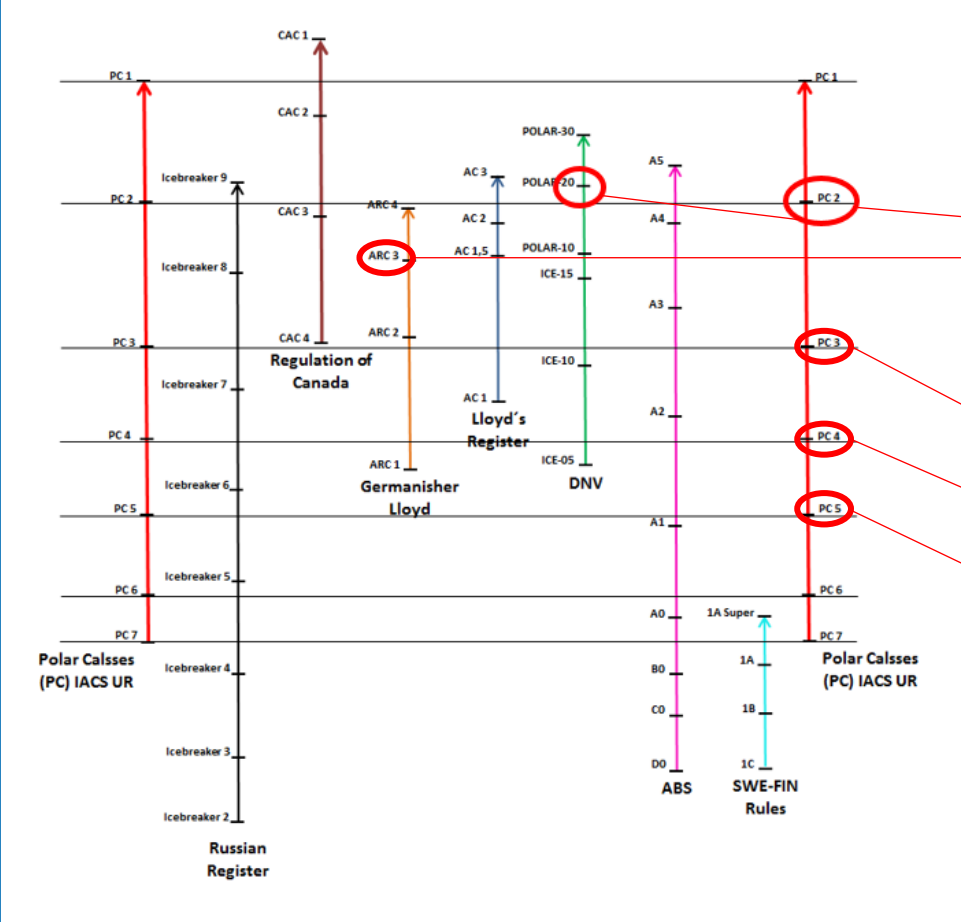
Draft operation: 7,0 – 8,5m

Max displacement: 13.000 t



**Bay of whales, Antarctica 2011
100 years after Fram**

ODEN Ice class and it's rivals



Icebreaker / Research Vessel ODEN

RV Polarstern

RV Kronprins Haakon & IB Fennica

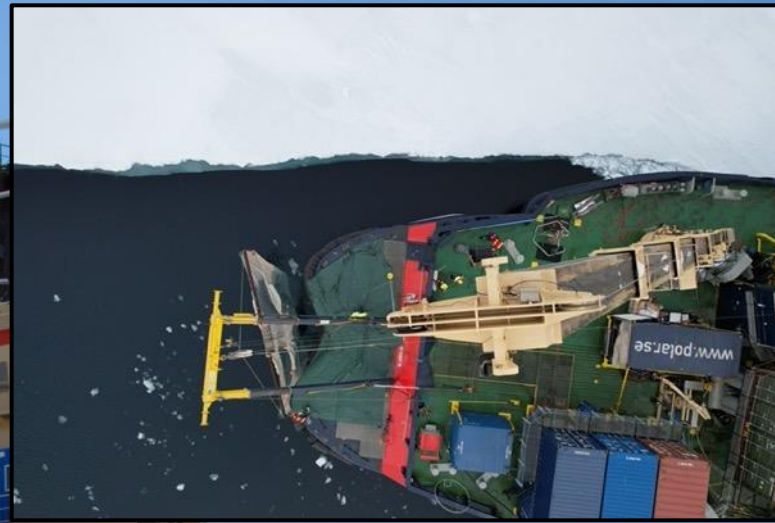
RV Sir David Attenborough

RV S.A. Agulhas II

Machinery

Propulsion: 4 medium speed 8-cylinder diesel engines, Sulzer ZAL40S, 2 dual input single output reduction gears, 2 CP propellers in nozzles, LIPS
Total power: 18.0 MW (24.500 hp)
Electric power plant: 4 medium speed 6-cylinder diesel engines .





Lifting / cargo handling Equipment

A-frame forward: 1,6 t

A-frame aft : 15 t

Crane on after deck: 10 t at radius 10 m, 1.7 t at radius 32 m,

Skylift on fore deck: hook load 1.5 t in basket, 0.3 t at 18.7 m,

Cranes P and Sb on 4:th deck: hook load radius 4,0m 3,2t to radius 16,4m 0,76t

CONTAINER CAPACITY: 40 TEU, containers can be connected to ship's service system, such as electricity, communication, water, sewage, gases etc.





Performance

Icebreaking capability:

At least 1,7 m Solid ice at 3 knots

Turning radius in 0,8 m ice:

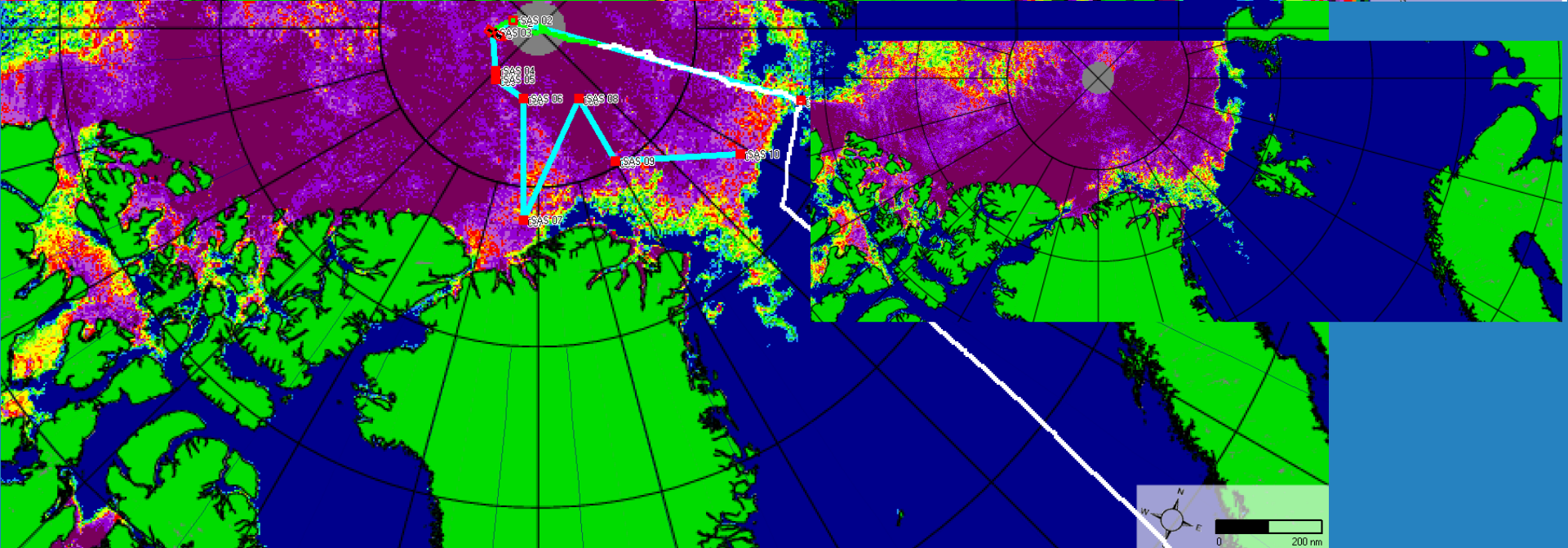
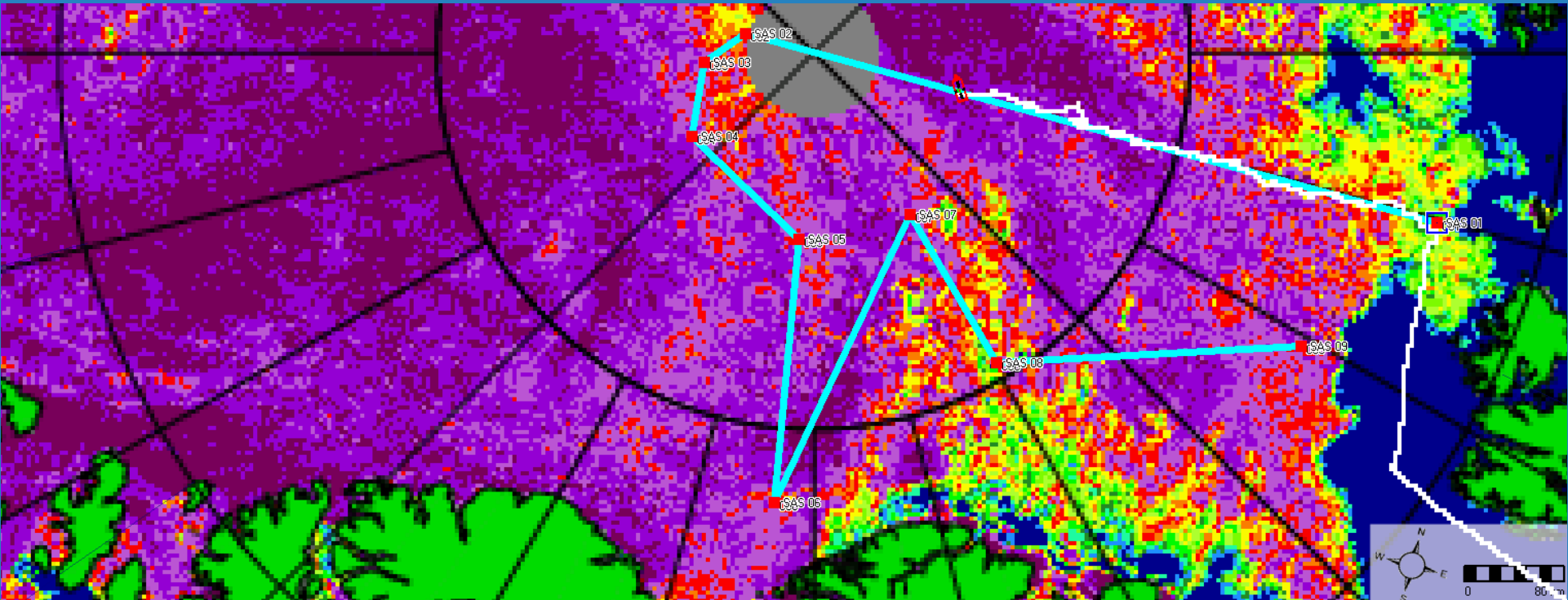
1 ship length

Max speed in open water:

16,5 knots

Endurance:

30.000 Nm at 13 knots or 100 days.



**Questions regarding navigation
in the polar areas before and
after implementation of the
Polar code.**

Thank you

**Captain: Mattias Petersson and Chief
Officer Mats Wisén**

Swedish polar icebreaker/research vessel Oden

