

# Inuvialuit Environmental and Wildlife Co-management in Canada's Western Arctic

**Patrick Gruben**  
***Inuvialuit Game Council- Chair***

**The Ecosystem Approach to Management of Arctic Ecosystems:  
Status of Implementation  
International Science and Policy Conference  
August 23-25, 2016  
Fairbanks, Alaska**

## Where ISR is in North America

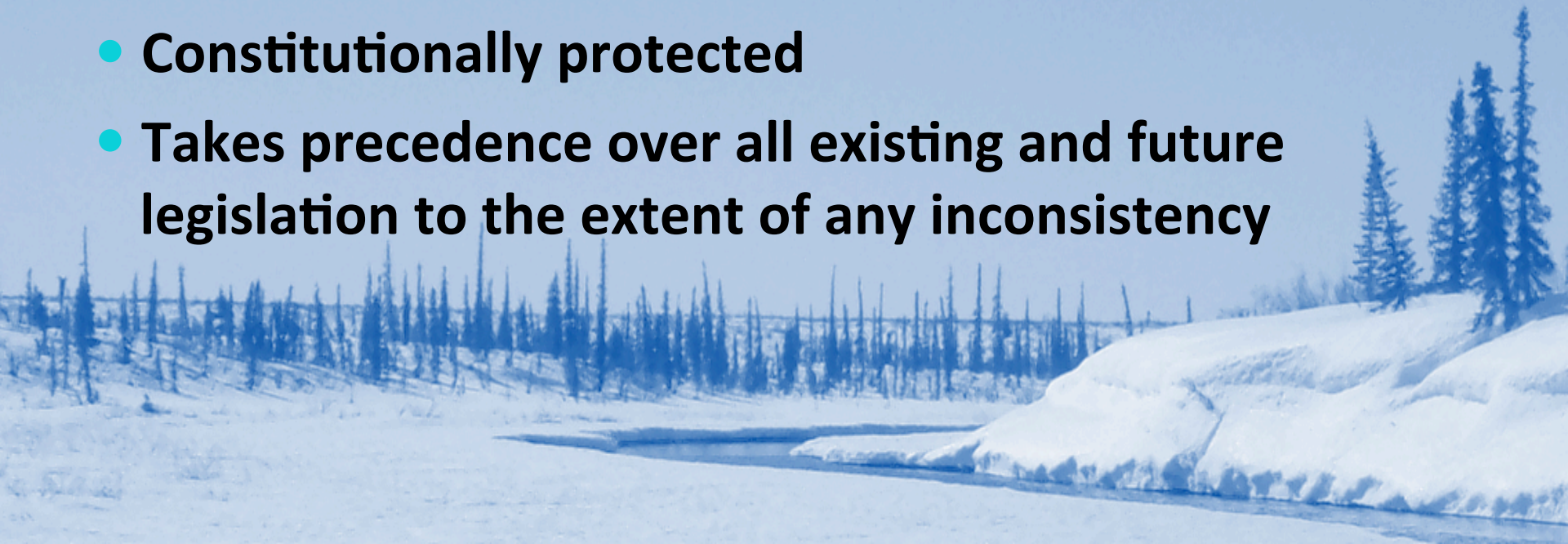


## Close up of ISR



# Inuvialuit Final Agreement (IFA)

- **Aboriginal land claim settlement between the Inuvialuit and Government of Canada**
  - **Signed in 1984**
- **Force of Statutory Law**
- **Constitutionally protected**
- **Takes precedence over all existing and future legislation to the extent of any inconsistency**



# Principles of the IFA

- To preserve Inuvialuit cultural identity and values within a changing northern society
- To enable Inuvialuit to be equal and meaningful participants in the northern and national economies and society
- To protect and preserve the arctic wildlife, environment, and biological productivity



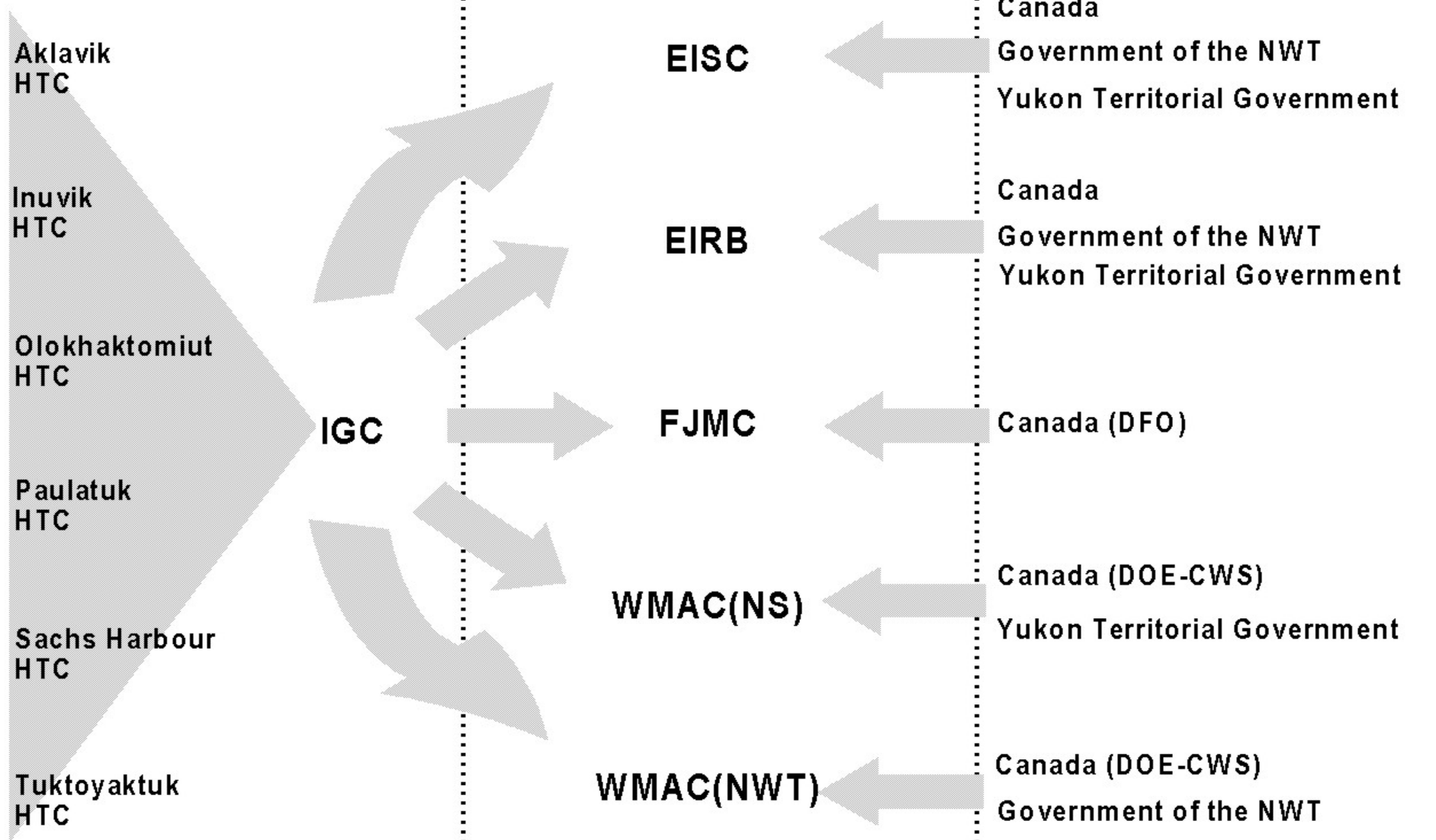
# **Wildlife Research and Management bodies established pursuant to the IFA**

- ❖ **Inuvialuit Game Council (IGC)**
- ❖ **Six community Hunters and Trappers Committees (HTC)**
- ❖ **Wildlife Management Advisory Council (NWT)**
- ❖ **Wildlife Management Advisory Council (North Slope)**
- ❖ **Fisheries Joint Management Committee**
- ❖ **Environmental Impact Screening Committee**
- ❖ **Environmental Impact Review Board**

**INUVIALUIT ORGANIZATIONS**

**CO-MANAGEMENT GROUPS**

**GOVERNMENT AGENCIES**



# Inuvialuit Game Council (IGC)

- **Represents the collective Inuvialuit interest in wildlife**
- **Appoints the Inuvialuit members to boards**
- **Advises co-management boards and governments on existing or proposed wildlife legislation**
- **Advises government on any proposed position for international purposes that affects wildlife in the ISR**
- **Appoint members to Canadian delegations dealing with international matters affecting wildlife harvesting by Inuvialuit**
- **Allocates wildlife quotas among communities**

# Inuvialuit Game Council (IGC)



- The IGC is made up of 6 Directors and a Chair
- The Chair is elected by the 42 HTC Directors for a four year term
- Meetings held quarterly



# **Roles of the Community: Hunters and Trappers Committees**

- **advise on all local matters**
- **advise on the requirements of subsistence users**
- **sub-allocate Inuvialuit quotas**
- **establish wildlife bylaws**
- **encourage and promote Inuvialuit involvement in conservation, research, management, enforcement, and utilization in relation to the wildlife resources in the ISR**

### **Wildlife Management Advisory Council (NWT)/(NS)**

- WMAC (NWT) has jurisdiction over the ISR lands in NWT; WMAC (NS) has jurisdiction over the ISR lands in Yukon North Slope.
- Provides advice to Ministers
- Advises on issues including research and development
- Prepare wildlife conservation and management plans
- Advise on measures required to protect critical wildlife habitat

### **Fisheries Joint Management Committee**

- Assist in administering the rights and obligations relating to fisheries
- Advise on regulations, research policies, administration of fisheries
- Determine and recommend harvest limits
- Develop conservation and management plans

### **Environmental Impact Screening Committee (EISC) Environmental Impact Review Board (EIRB)**

- EISC is first step of assessment process
- Initial environmental screening for proposal
- Proposal may be referred to EIRB for further review
  
- EIRB is second step of assessment process
- Detailed environmental impact assessment and review
- Considers the need for wildlife compensation, mitigation, and remedial measures

# Initiatives & Successes



## Initiatives & Successes

- ❖ **International Polar Bear Management Agreement for the Southern Beaufort Sea (1988)**
- ❖ **Polar Bear Management Agreement for the North Beaufort Sea and Viscount Melville Sound Polar Bear Populations**



# Initiatives & Successes

## ❖ Grizzly Bear quota system

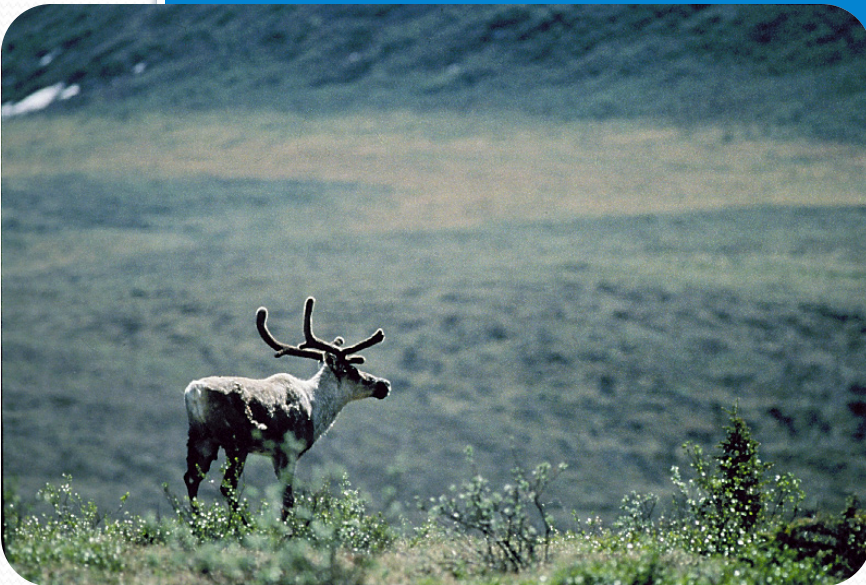
- Community input led to population survey
- Quota system
- Local knowledge informed management actions



## Initiatives & Successes

### ❖ Bluenose Caribou

- Managing populations in a state of decline
- Community input
- Stabilized declining population





## Initiatives & Successes

- ❖ Inuvialuit Inupiat Beluga Whale Agreement
- ❖ Beaufort Sea Beluga Whale Management Plan (BSBMP)
- ❖ Beluga Harvest Monitoring Program



## Initiatives & Successes

- ❖ Beaufort Regional Environmental Assessment (BREA)
- ❖ Regional Strategic Environmental Assessment (RSEA)



# *Inuvialuit, Co-management & Research*

- **Equal and meaningful participants in resource management and research programs**
- **Work with different levels of government, researchers, developers**
- **National and International level involvement**
- **Regional level involvement**
- **Community level involvement**

Thank You!  
Quyainainni!

