

PAME

Protection of the Arctic Marine Environment



Arctic Ship Traffic Data

ASTD

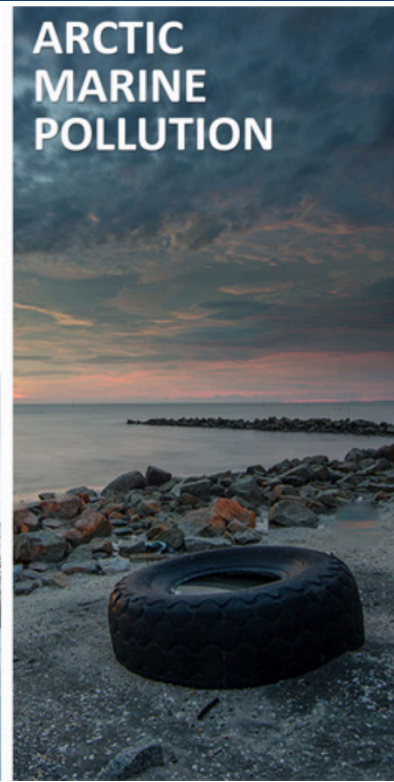
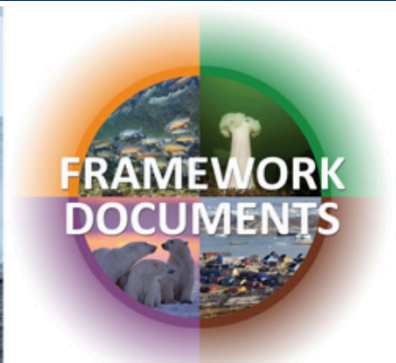
19 September 2018

Hjalti Hreinsson

PAME Secretariat

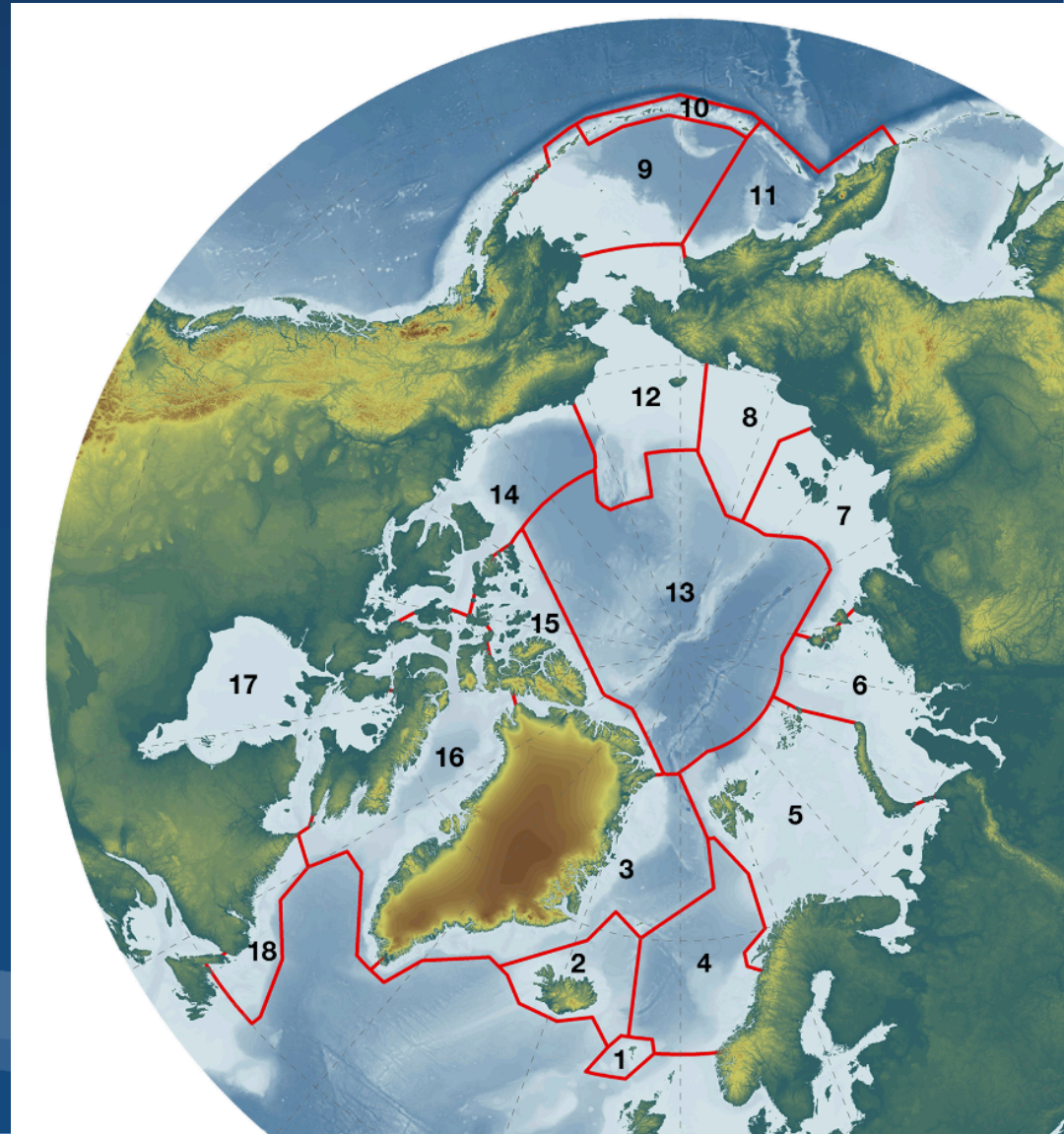
PAME
Protection of the Arctic Marine Environment

PAME's Work

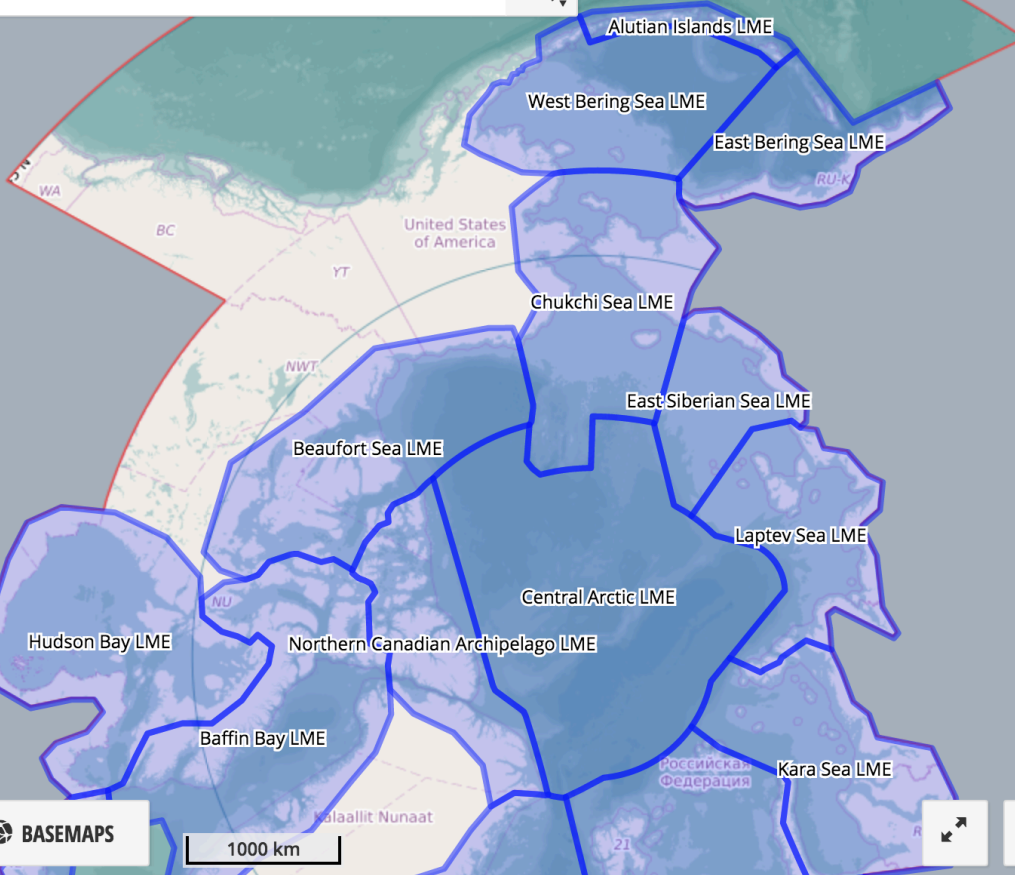


Ecosystem Approach to Management

- Ecosystem work:
 - Shipping in the Large Marine Ecosystem
 - Effects etc.
 - ASTD areas include the LME's
 - Comparison between LME's



Search for content in selected sources



BASEMAPS

1000 km



Map © ArcticConnect. Data © OpenStreetMap contributors

Arctic area traffic Collapse >

i Displays traffic, fuel consumption or emissions by Norwegian or Lloyds categorization of ship types.

Select area of interest:

EEZ LME SAR PAME

Polar code

Select your region from the list below or click on the map:

Main ship type:

ASTD types IHS Fairplay

Select vessel types: Select all

Statistics type:

Select period:

Create report

Data download



ect. Data © OpenStreetMap contributors



Arctic area traffic

[Collapse >](#)



Displays traffic, fuel consumption or emissions by Norwegian or Lloyds categorization of ship types.

Select area of interest:

- EEZ LME SAR PAME
 Polar code

Select your region from the list below or click on the map:

Main ship type:

- ASTD types IHS Fairplay

Select vessel types:

Select all

Statistics type:

Select period:

Create report

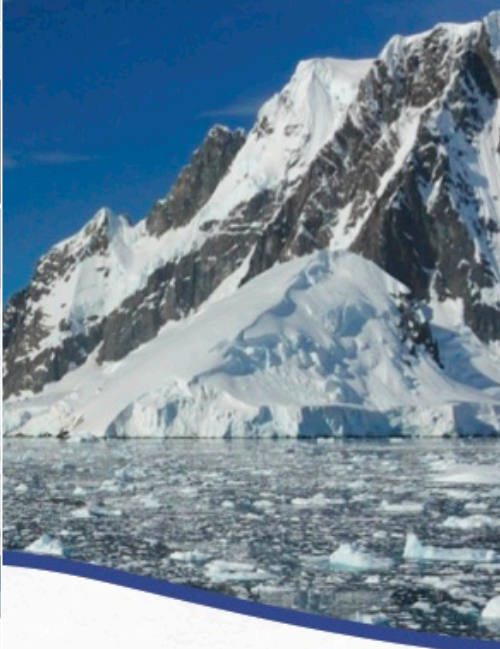
Data download

Area-based
and eco



Framework for Pan-Arctic Net Marine Protect

April 2015



PAME
Protection of the Arctic Marine Environ

PAME
Protection of the Arctic Marine Environment



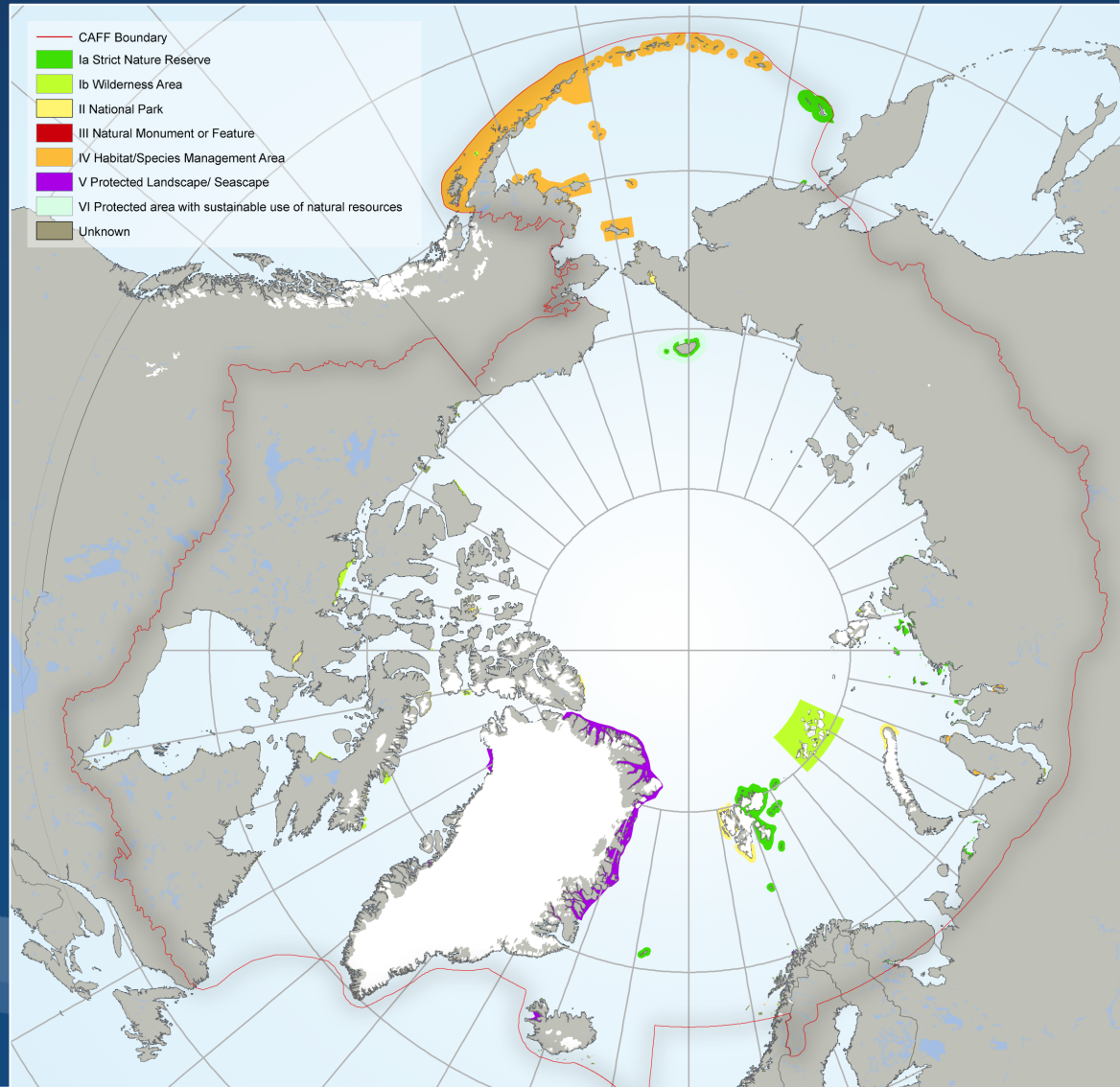
ARCTIC PROTECTED AREAS INDICATOR REPORT 2017

CAFF
Conservation of Arctic Flora and Fauna

PAME
Protection of the Arctic Marine Environment

Marine Protected Areas

- Similar to LME's
- Need capability to add shapefiles to the system



PAME Shipping Projects 2017-2019

- Collect and report information on use of Heavy Fuel Oil (HFO) in the Arctic
 - (Co-leads: Canada, USA)
- Collect, report and/or review information about on-shore use by indigenous peoples and local communities of HFO
 - (Co-leads: USA, AIA, CCU)
- Prepare an information paper summarizing PAME's work on HFO
 - (Co-leads: Canada, PAME Secretariat)
- Explore the environmental, economic, technical and practical aspects of the use by ships in the Arctic of alternative fuels
 - (Co-leads: Norway, WWF)
- Harmonized implementation of the Polar Code
 - (Co-leads: Finland, Russian Federation)
- Collect and summarize information on Arctic State safe and low-impact marine corridor initiatives
 - (Co-leads: Canada, Iceland, AIA)
- Compendium of Arctic Shipping Accidents, Joint PAME/EPPR project
 - (Lead: USA)
- Engagement with Observer States
 - (Co-leads: USA, AIA (Shipping Expert Group))
- Update of PAME's shipping priorities and recommendations
 - (Co-leads: USA; Canada)
- Operationalization of the Arctic Shipping Traffic Database (ASTD) System
 - (Co-leads: Arctic states (PAME HoDs), ASTD Expert Group, PAME Secretariat)
- Operationalization of Arctic Shipping Best Practices Information Forum
 - (Co-leads: Shipping Expert Group (SEG) co-chairs (USA/Canada), Finland, PAME Secretariat)
- Develop an Implementation Plan for the ARIAS Strategy and Action Plan
 - (Refer to CAFF's work plan)

PAME Shipping projects

- Current projects
 - HFO
 - Polar Code
 - Shipping Corridors
 - Shipping accidents
 - Invasive species
- Future projects:
 - HFO and fuel use
 - Alternatives to HFO
 - Emissions of ships
 - Shipping in the Polar Code area
 - Shipping accidents integrated to ASTD?
 - Arctic Shipping Trend Report
 - Trend analysis on all ASTD aspects
 - ASTD info to PAME website
 - Observer countries in the Arctic – shipping information
 - Tourism
 - Analyse cruise and passenger vessels

EXAMPLE