



Western Arctic Mariner's Guide



Purpose of the Mariner's Guide

- Communicate community concerns about shipping
- Inform the development of low impact corridors
- Provide recommendations to reduce the impact from shipping








Inuvialuit Settlement Region






Developing a Draft Mariner's Guide

ARCTIC CORRIDORS AND NORTHERN VOICES

Governing Marine Transportation in the Canadian Arctic:
Sachs Harbour, Inuvialuit Settlement Region, Northwest Territories


ARCTIC CORRIDORS RESEARCH

Environment, Society and Policy Group, University of Ottawa www.espg.ca

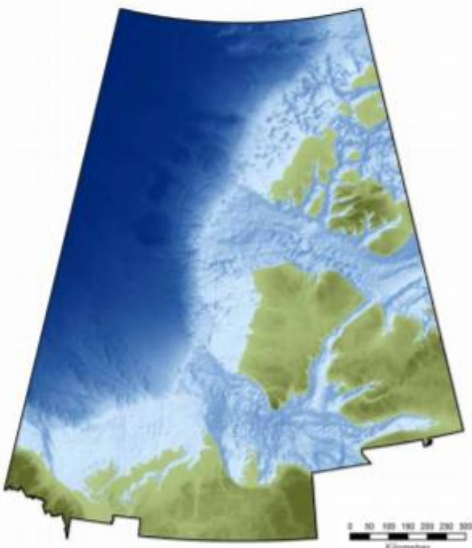
2018

Natalie Carter, Jackie Dawson, Colleen Parker, Julia Cary, Holly Gordon, Zuzanna Kochanowicz, Melissa Weber

1

BEAUFORT SEA BELUGA MANAGEMENT PLAN


Amended Fourth Printing 2013



0 50 100 150 200 250 300
Kilometres

SACHS HARBOUR COMMUNITY CONSERVATION PLAN
Sachs Harbour Angalatchivingit Niryutinik

A plan for the conservation and management of renewable resources and lands within the Inuvialuit Settlement Region in the vicinity of Banksland, Northwest Territories



Prepared by

The Sachs Harbour Hunters and Trappers Committee, Sachs Harbour Community Corporation, and The Wildlife Management Advisory Council (NWT), The Fisheries Joint Management Committee and the Joint Secretariat

2016

Previous Success





Western Arctic Mariner's Guide

The following marine mammals are common in the western Arctic, however, other species may also be seen. It's possible for marine mammals to venture outside of their common habitats and be seen elsewhere.



Bowhead Whale Length: 30-40m
Appearance: Dark to light grey, with white markings on the head, belly and tail and dorsal ridge. The dorsal ridge is low and broad. The head is large and tapers to a point. The mouth is wide and the lower jaw is curved. The skin is wrinkled and the whale has a small eye.

Grey Whale Length: 25-35m
Appearance: Dark to light grey, with white markings on the head, belly and tail and dorsal ridge. The dorsal ridge is low and broad. The head is large and tapers to a point. The mouth is wide and the lower jaw is curved. The skin is wrinkled and the whale has a small eye.

Beluga Whale Length: 3-6m
Appearance: Adults are white, with young on dark grey. The white is most prominent on the belly and the dark grey is most prominent on the back. The head is large and tapers to a point. The mouth is wide and the lower jaw is curved. The skin is wrinkled and the whale has a small eye.

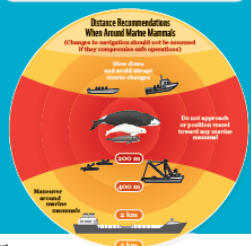
Orca Length: 3-9m
Appearance: Black body with white underbelly and spot behind the eye. Grey under belly and white on the head. The dorsal fin is tall and curved. The head is large and tapers to a point. The mouth is wide and the lower jaw is curved. The skin is wrinkled and the whale has a small eye.

Ringed Seal Length: 1.5-2.5m
Appearance: Light grey to dark brown, with light brown spots on head and light grey underbelly. Long, white whiskers and rounded flippers. The dorsal fin is small and the lower jaw is curved. The skin is wrinkled and the whale has a small eye.

Harp Seal Length: 1.5-2.5m
Appearance: Light grey body with black or brown head and long, black whiskers. The dorsal fin is small and the lower jaw is curved. The skin is wrinkled and the whale has a small eye.

Bearded Seal Length: 1.5-2.5m
Appearance: Light grey to dark brown, with light brown spots on head and light grey underbelly. Long, white whiskers and rounded flippers. The dorsal fin is small and the lower jaw is curved. The skin is wrinkled and the whale has a small eye.

Caribou Length: 1.5-2.5m
Appearance: Both males and females have antlers, with greyish velvet. Males have antlers that branch into many points. The head is large and tapers to a point. The mouth is wide and the lower jaw is curved. The skin is wrinkled and the whale has a small eye.



WWF Canada, 2015. All rights reserved. This document is for informational purposes only and does not constitute an offer of insurance or any other financial product. For more information, please contact your insurance broker or the appropriate regulatory authority. The information in this document is not intended to be used as a substitute for professional advice. The information in this document is not intended to be used as a substitute for professional advice. The information in this document is not intended to be used as a substitute for professional advice.



Western Arctic Mariner's Guide

RECOMMENDATIONS

Iceberging
• Avoid iceberging during ice formation and break-up (Victoria Island to mainland) from October to June.
• Avoid iceberging through and around lead and opening areas.
• Avoid iceberging in polynya approximately November to June.
• Avoid crossing on ice consistently approximately November to June.
• Avoid shipping through the Prince of Wales Strait during winter season (October to June).
• Avoid shipping through and around flow ridges in April, May and June.

Boatling
• Communicate schedules, locations and routes (by phone, email, and fax) to relevant local organizations (see contact list).

Subsistence Harvesting
• Avoid culturally significant marine areas during harvesting seasons:
- Beluga harvest: June to August (inclusive)
- Seal harvest: Year-round
- Polar Bear harvest: October to May
- Subsistence Fishing: Another 500 meters from Ukkahukuk from July to September.
• Call ahead to the appropriate and respective IFEC/IFECs to report offers to use harvesting in taking place near planned routes - i.e., before when safe.

Operations
• The disturbance, damage or destruction (including through the depositing, discharging or dumping any substance) of any living marine organisms or any part of its habitat is prohibited.

Permitting
• For educational, marine tourism, or scientific research within the ANMPA, submit activity plan to IFEC at least 30 days prior to the planned start date for the activity.
• Consider Bowhead Ship Biolog Management Plan location guidelines, along with consultation with the local IFEC, for all whale watching, tourism projects.

Speed
• Reduce speeds below 10 knots in biologic management areas, Dease Strait and Queen Maud Gulf.

LOCAL PHONE NUMBERS

Contact the nearest community: Masters and Skipper, Inuvialuit Association for local knowledge of marine mammals.
Aklavik: 867-979-0751 Nuuk: 867-999-2908
Ukkahukuk: 867-926-2848 Tukuhukuk: 867-927-9427
Isaak: 867-977-2474 Cambridge Bay: 867-983-4549
Pitmelek: 867-929-2104
Juvik: 867-929-2104
Juvik: 867-929-2104
Juvik: 867-929-2104

CANADIAN WILDLIFE SERVICE

Contact for permitting requirements if conducting a Migration and Harvest or National Wildlife Area.
Telephone: 1-800-488-6167
Email: awc@wildlife.gc.ca

NATIONAL PARKS

Telephone: 867-977-8800
Email: 3663.1@pca.gc.ca

ANGUNAVIAQ NIQUIYUAM MPA

Telephone: 867-977-7206
Email: ANMP@pca.gc.ca



NOTE: For navigation purposes, please use charts provided by the Canadian Hydrographic Service.



Western Arctic Mariner's Guide

HABITAT: Summer

Legend
• Polar Bear Concentration
• Ringed Seal Concentration
• Beluga Concentration
• Orca Concentration
• Key Migration Routes



HABITAT: Winter

Legend
• Polar Bear Concentration
• Ringed Seal Concentration
• Orca Concentration
• Key Migration Routes



CONTACT

Please contact for contact, additional resources, additional information:
Address: Bowhead, Inc. 100-100-1000
Telephone: 867-977-7206
Email: info@bowhead.ca
Website: www.bowhead.ca

MARINE WILDLIFE SIGHTINGS, ENCOUNTERS & INCIDENTS

Report the Department of Fisheries and Oceans, Marine Biologists, via 911 or 1-800-488-6167.

- How long you observed the animal or observed the incident.
- Date and time you found the animal or observed the incident.
- Specific location, including latitude and longitude (if available) or direction of movement (if available).
- Species or type of animal, including a description of the size, colour, features.
- Condition of the animal - alive, sick or injured, healthy dead, badly injured, etc.
- Number of animals involved.
- Your contact information, including name and phone number.

RECOMMENDATIONS

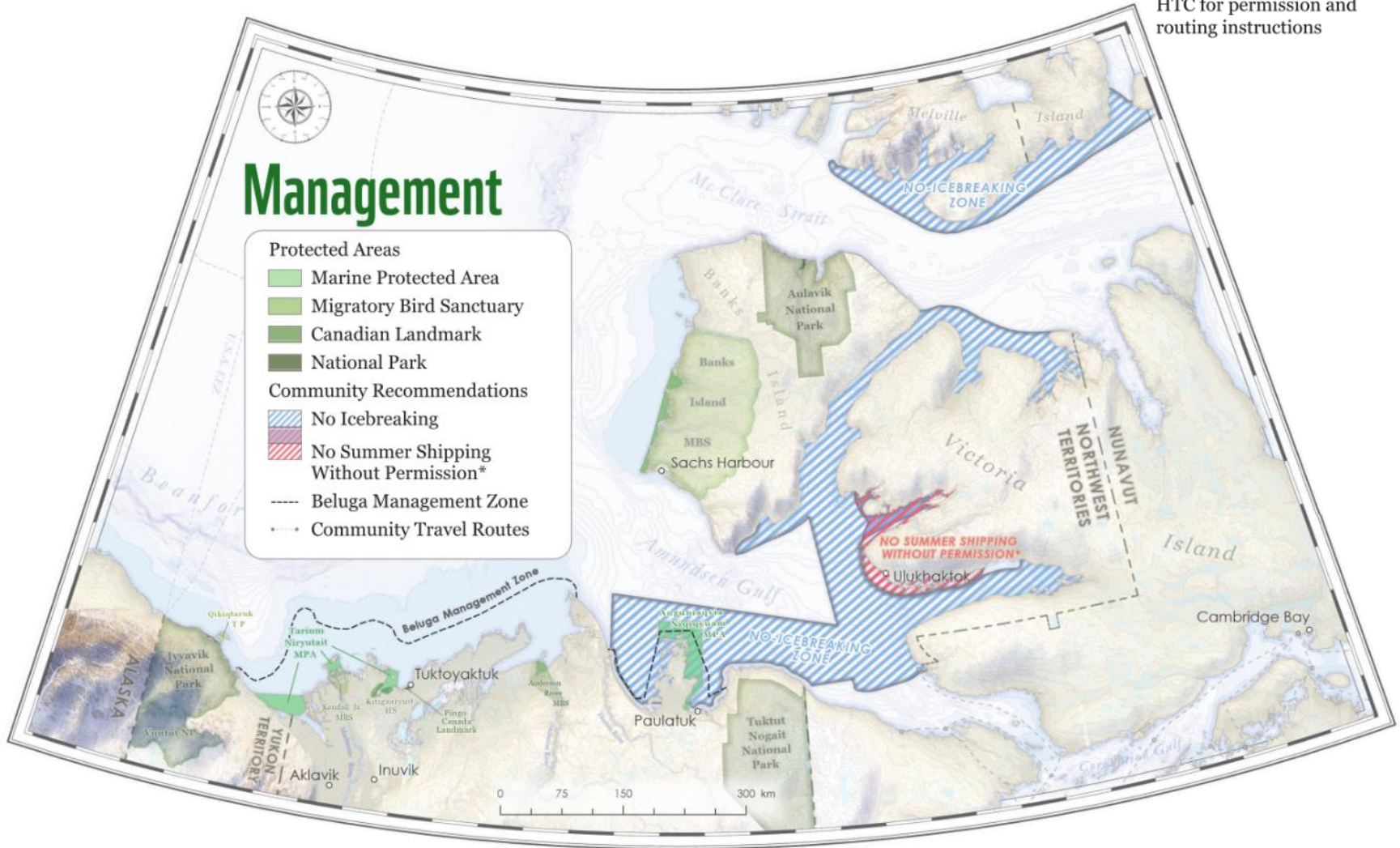
Whale Sensitive Habitats
• If possible, avoid vital calving, foraging, resting, and migration areas and follow mitigation procedures in the vicinity of marine mammals.
• Wildlife will be given right-of-way.
• Maintain a straight course and consistent speed, avoiding erratic behaviour.
• When marine mammals appear to be trapped or distressed by vessel movements, implement appropriate measures to mitigate disturbance, including stoppage of movement until animals have moved away from the disturbance area, and:
• Adhere to setback distance (see chart) when in the presence of marine mammals.
• Passing through or close to Biologic Management Zones is not allowed in designated routes, even if it's the shortest route (avoid be avoided from break-up to August (see map) (Contact IFEC for annual variations).

Migratory Bird Sanctuaries
• Harrowing, disturbing, interrupting or taking of migratory birds or their nests are prohibited.
• Maintain a 500 m setback for shore birds and other birds when birds are present.
• Maintain a 100 m setback from seabird colonies for gulls, jaegers and other small seabird species.
• Maintain a 500 m setback distance from sea duck colonies, resulting aggregation of sea ducks and waterfowl.
• Avoid any drop or land mines, do not blow horns or whistles, and maintain consistent engine noise levels.
• Always travel at steady speeds when close to seabird and waterfowl colonies, steering parallel to the shore rather than approaching the colony directly.

NOTE: For navigation purposes, please use charts provided by the Canadian Hydrographic Service.

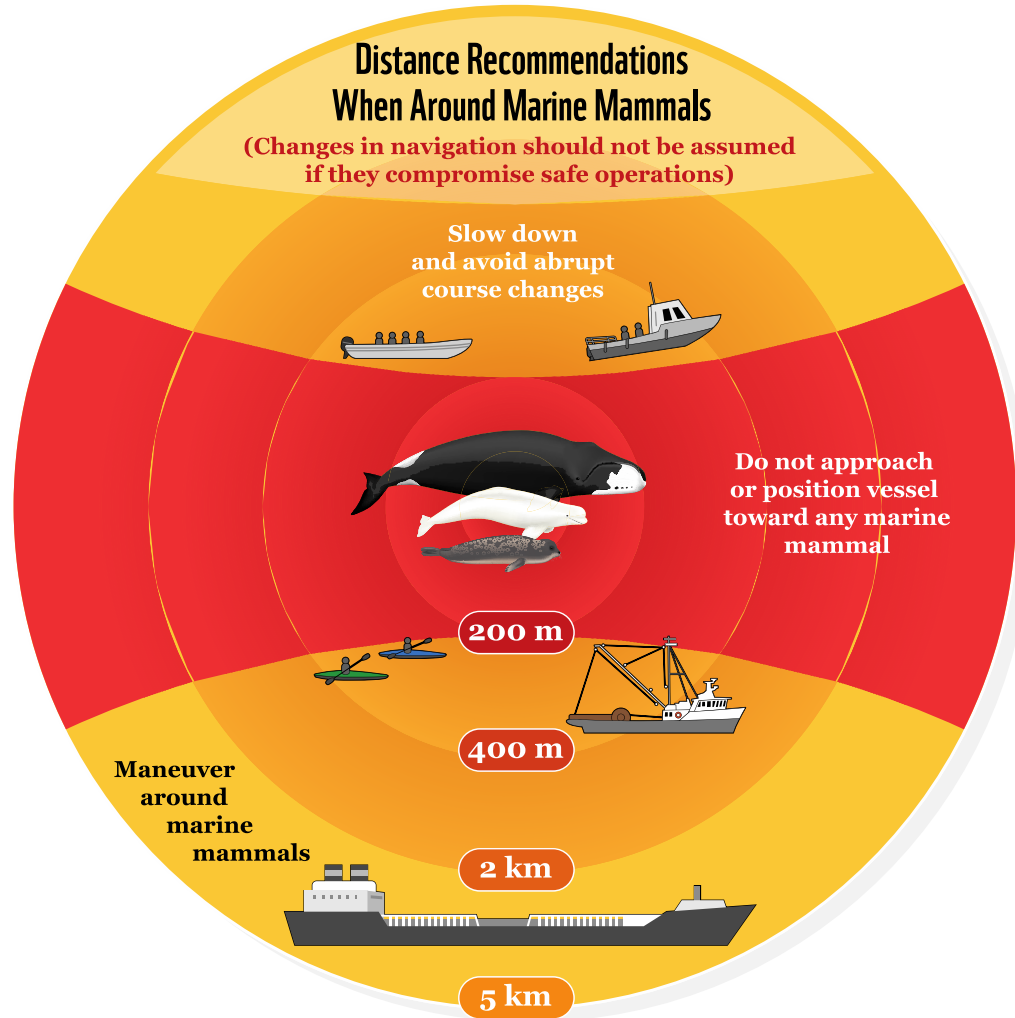
Management

* Contact Olokhaktomiut HTC for permission and routing instructions

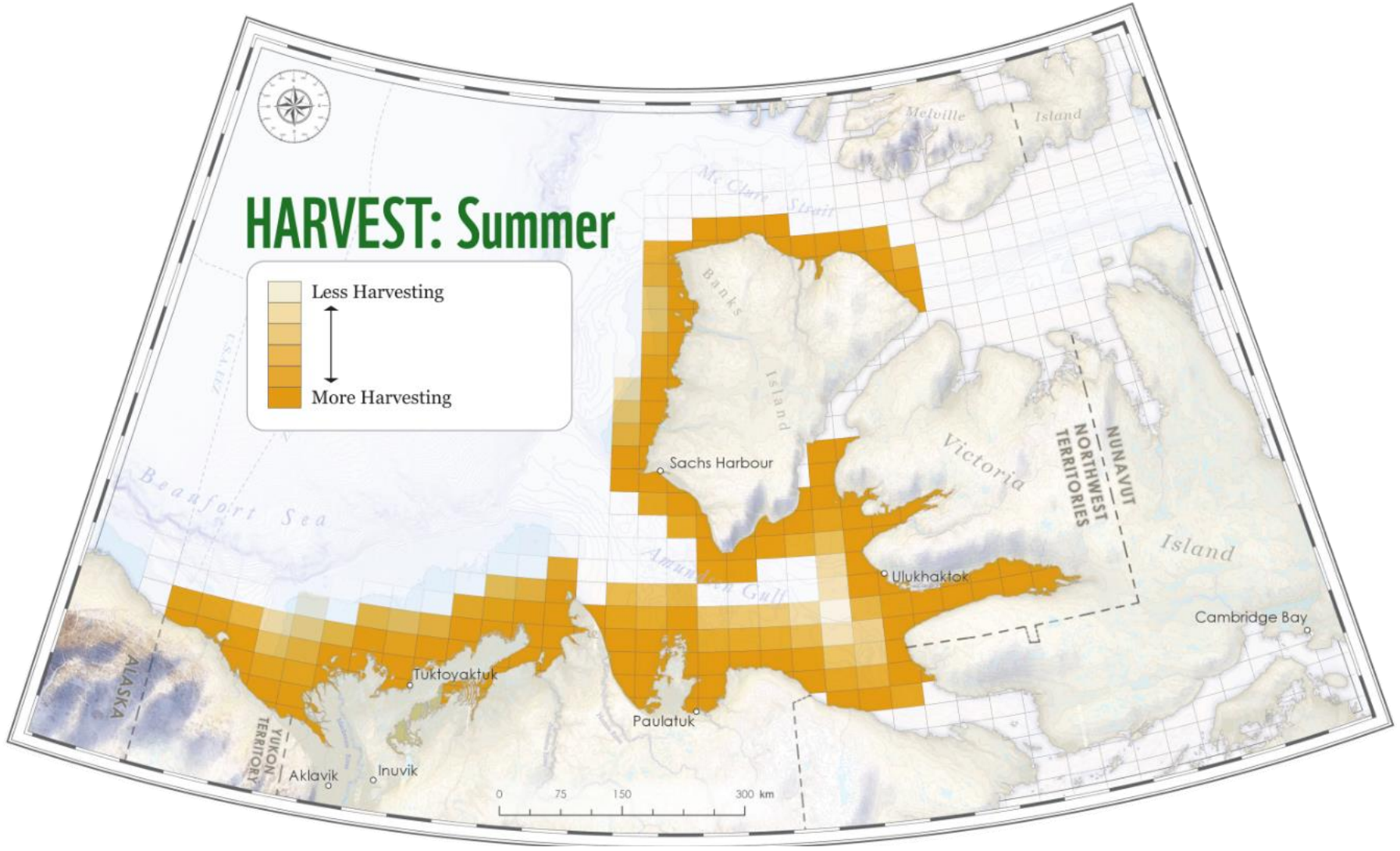


Recommendations

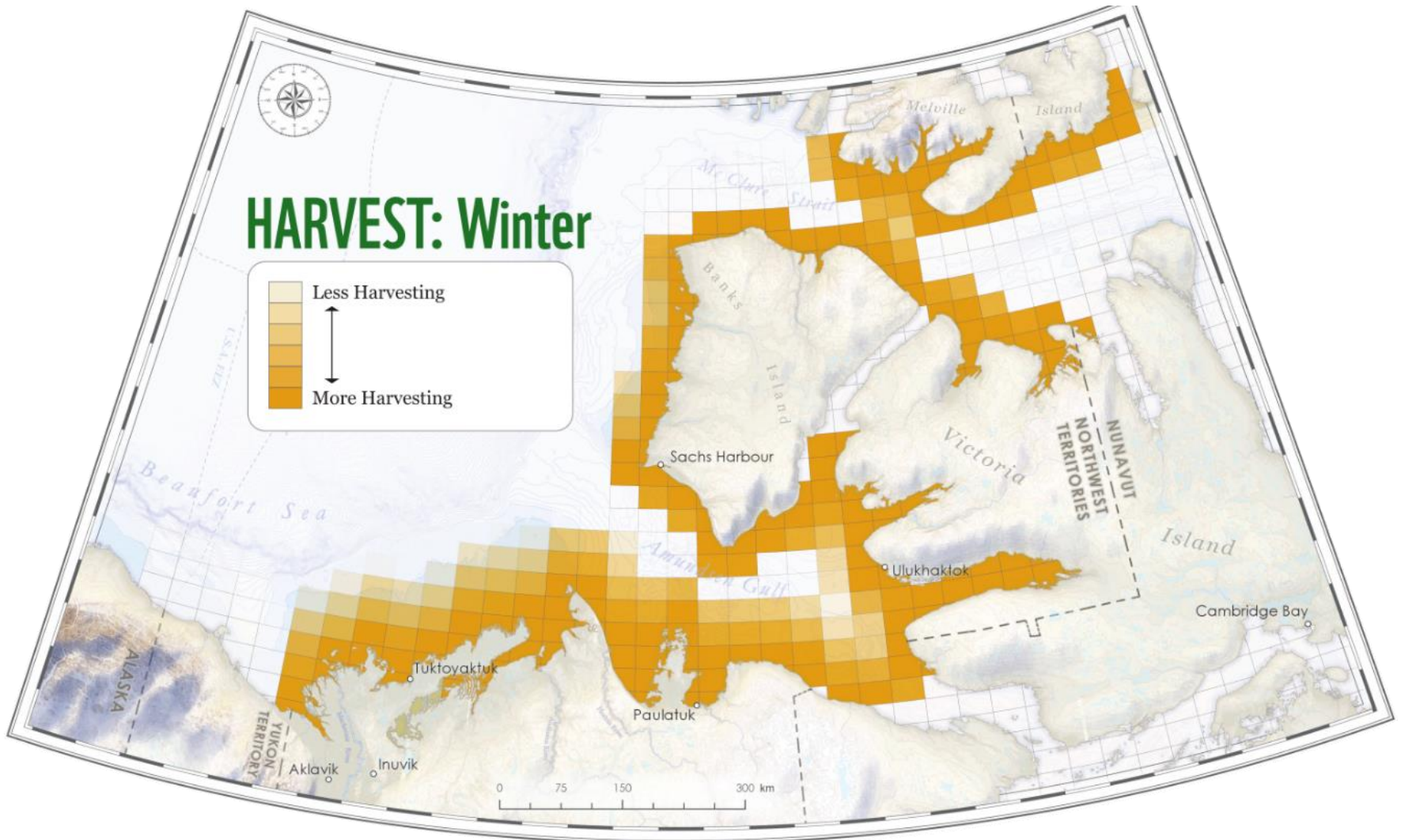
Whale Sensitive Habitat



Harvest: Summer



Harvest: Winter

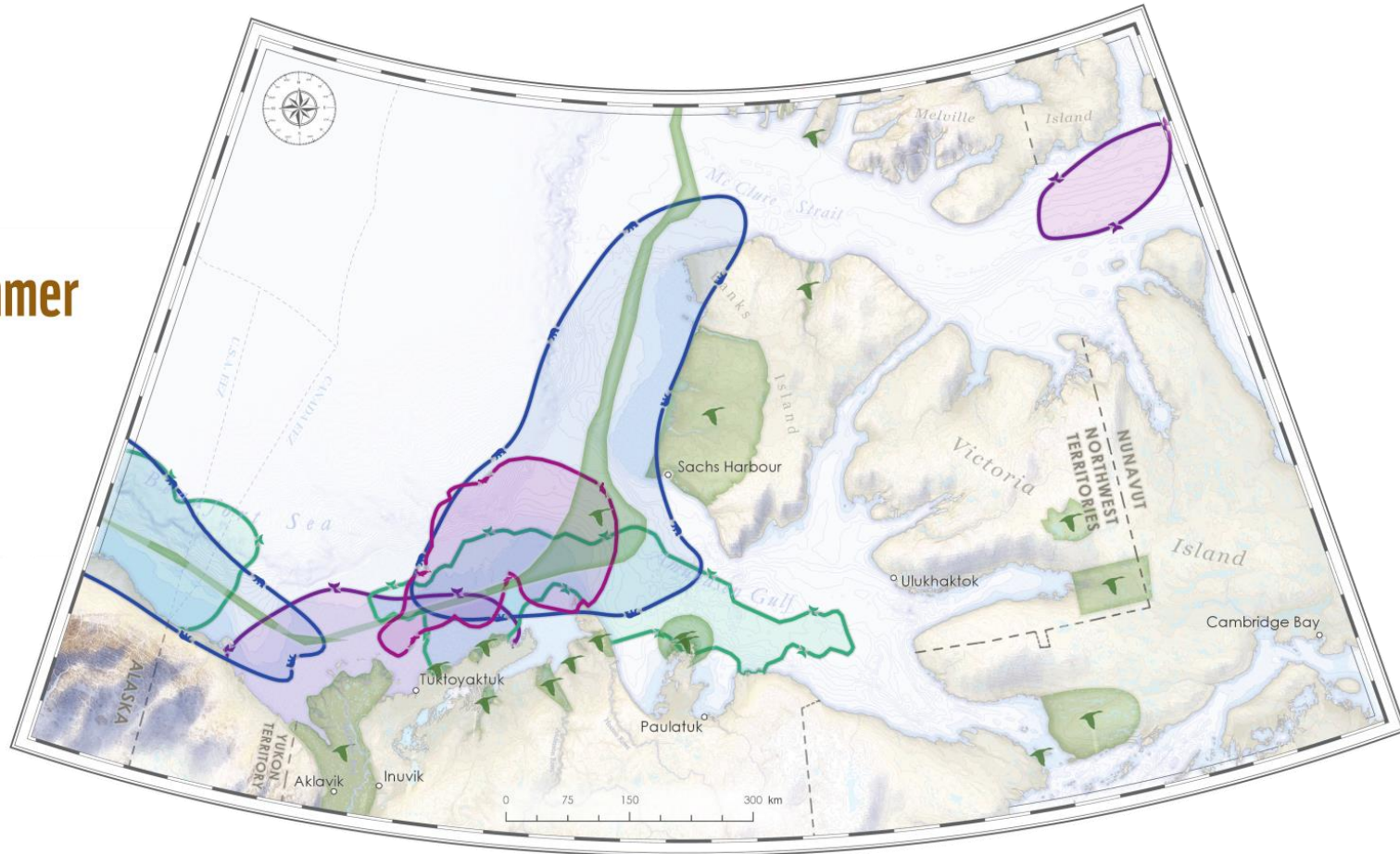


Habitat: Summer

HABITAT: Summer

Legend

- Polar Bear Concentration
- Ringed Seal Concentration
- Bowhead Concentration
- Beluga Concentration
- Key Migratory Bird Habitat

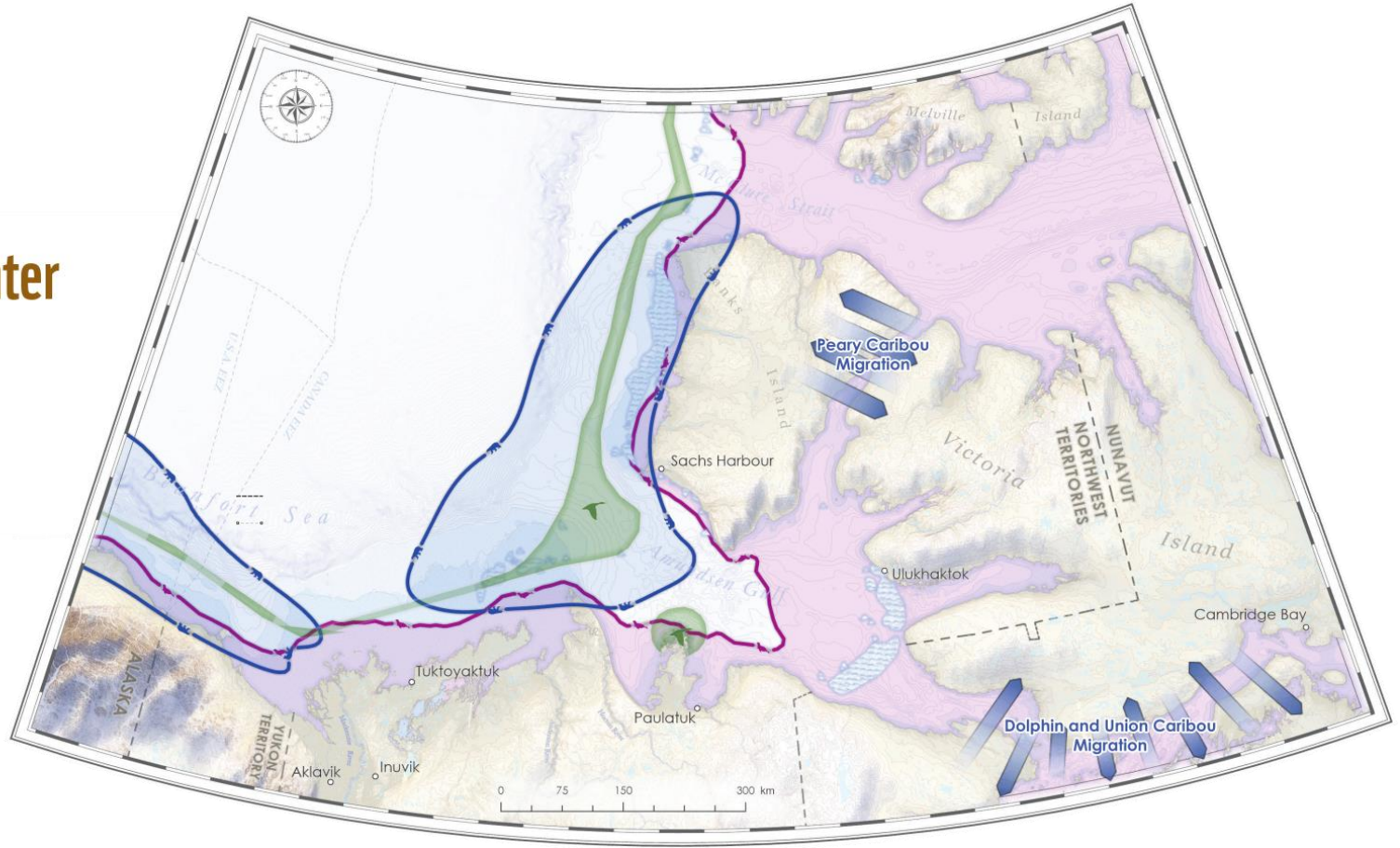


Habitat: Winter

HABITAT: Winter

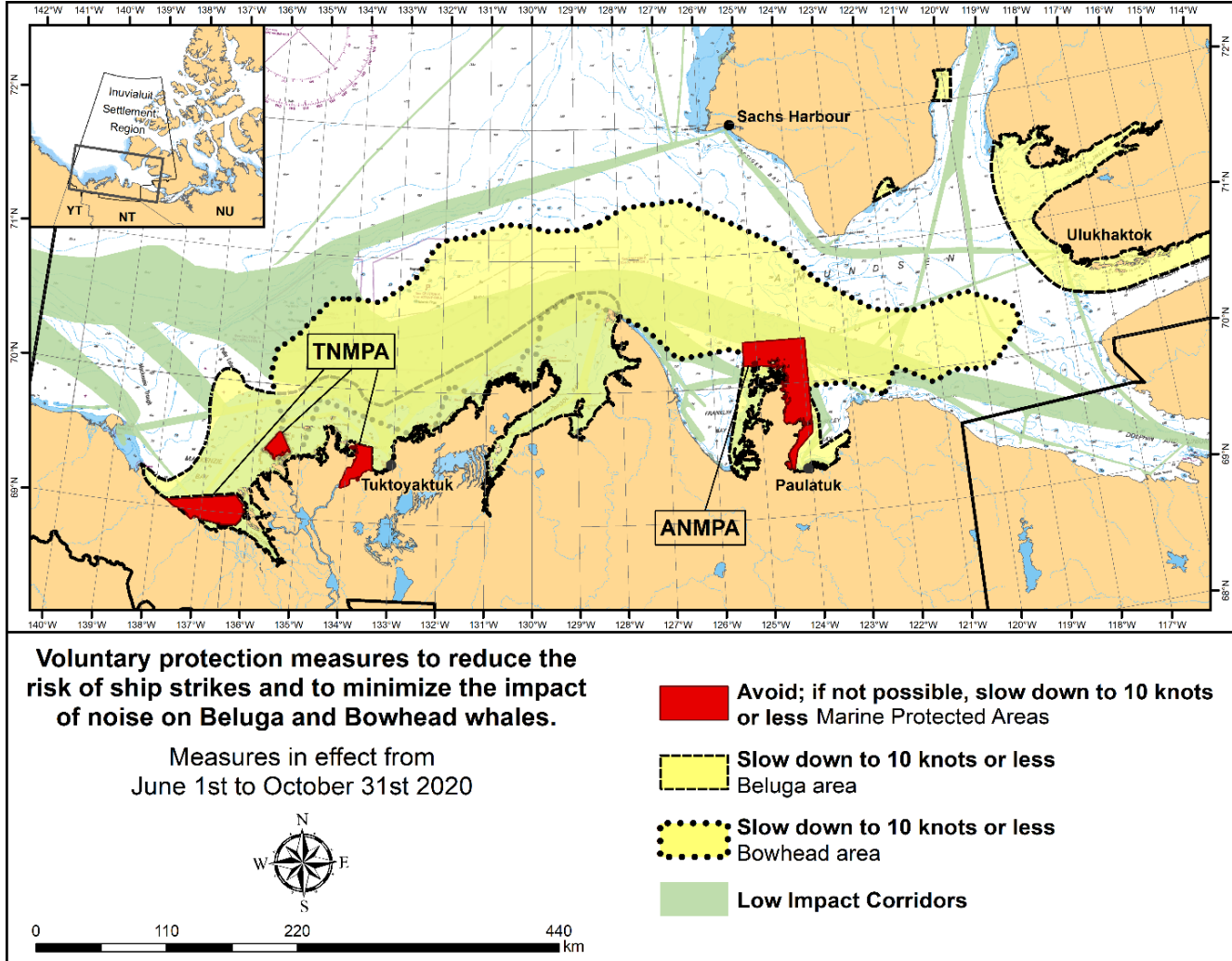
Legend

- Polar Bear Concentration
- Ringed Seal Concentration
- Polynya
- Key Migratory Bird Habitat
- Caribou Migration Route





Notice to Mariners





Thank you

wwf.ca

For questions or comments, or to request a copy:
sdavin@wwfcanada.org