



SLSAVARNAFÉLAGIÐ  
LANDSBJÖRG

# Safety of Arctic Seafarers and fishermen Survival in cold water

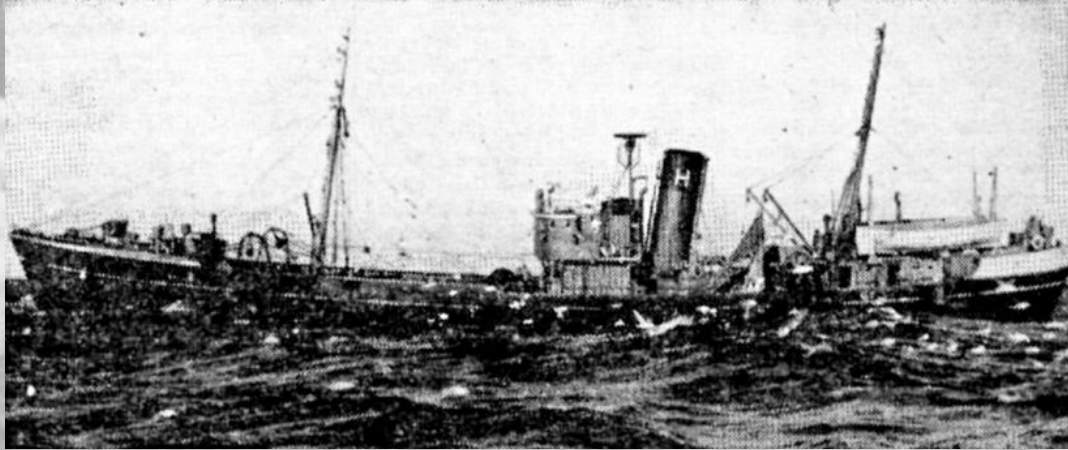


Capt. Hilmar Snorrason

Maritime Safety and Survival Training Centre



# Newfoundland bank 1959



The Icelandic trawler JÚLÍ perished with 32 strong sailors due to icing



# Icelandic waters 1968

Icelandic fishing vessel and triple British trawlers  
lost due to icing with 65 life lost



# Icelandic requirements

Stability calculation for icing condition



# Woolen cloths

Seafarers best protection form cold was woolen cloths from top to bottom



# Surviving the cold water

Safety training in Iceland since 1985

Knowledge of hypothermia

Prepare for the cold









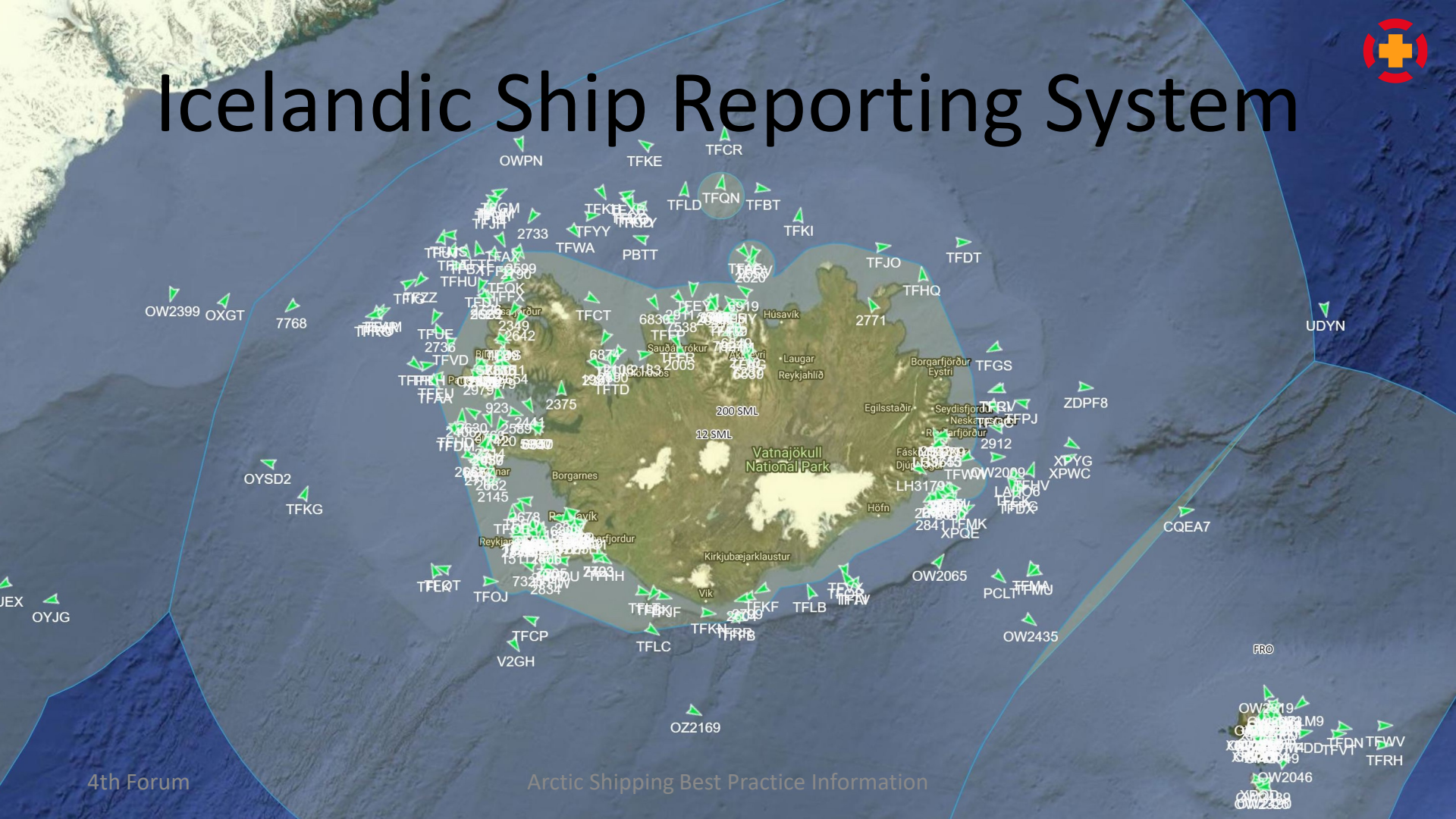


# Learning from past





# Icelandic Ship Reporting System



4th Forum

Arctic Shipping Best Practice Information

OW2319  
 OW2320  
 OW2321  
 OW2322  
 OW2323  
 OW2324  
 OW2325  
 OW2326  
 OW2327  
 OW2328  
 OW2329  
 OW2330  
 OW2331  
 OW2332  
 OW2333  
 OW2334  
 OW2335  
 OW2336  
 OW2337  
 OW2338  
 OW2339  
 OW2340  
 OW2341  
 OW2342  
 OW2343  
 OW2344  
 OW2345  
 OW2346  
 OW2347  
 OW2348  
 OW2349  
 OW2350  
 OW2351  
 OW2352  
 OW2353  
 OW2354  
 OW2355  
 OW2356  
 OW2357  
 OW2358  
 OW2359  
 OW2360  
 OW2361  
 OW2362  
 OW2363  
 OW2364  
 OW2365  
 OW2366  
 OW2367  
 OW2368  
 OW2369  
 OW2370  
 OW2371  
 OW2372  
 OW2373  
 OW2374  
 OW2375  
 OW2376  
 OW2377  
 OW2378  
 OW2379  
 OW2380  
 OW2381  
 OW2382  
 OW2383  
 OW2384  
 OW2385  
 OW2386  
 OW2387  
 OW2388  
 OW2389  
 OW2390  
 OW2391  
 OW2392  
 OW2393  
 OW2394  
 OW2395  
 OW2396  
 OW2397  
 OW2398  
 OW2399  
 OW2400



# Weather and Ice forecast





Thank you